

E9F231- COMPONENTS

PROJECT
TYPE
NOTES
QUANTITY
DATE

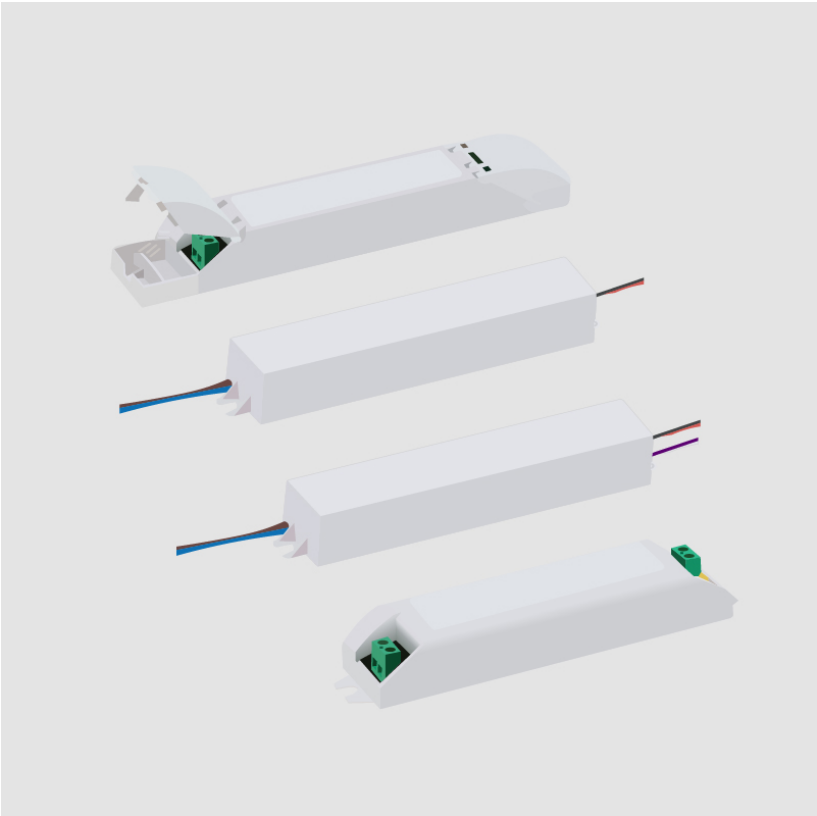
DMX100PROGES

**DESCRIPTION**  
Eldoled - POWERdrive PW01061S1 - DMX/RDM Dimming - 100W - 4x 57V Outputs - 200-1050mA - 120-277Vac - Programmable LED power supply

**PHYSICAL**  
Length (mm): 230  
Length (in): 9 1/16  
Width (mm): 80  
Width (in): 3 5/32  
Height (mm): 30  
Height (in): 1 3/16  
Weight (kg): 0.93  
Weight (lbs): 2.05  
Fixture Material: Metal

**ELECTRICAL**  
Lamp Type: LED  
Total Output Wattage (W): 0.4-100  
Dimming: Bluetooth technology or DMX  
Driver Type: Constant Current - Universal  
Driver Class: Class 2  
Housing: ENCP8 (Indoor rated only - IP65 or higher to be supplied by others)  
Input Voltage (V): 120 - 277  
Constant Current (MA): 200-1050  
Constant Voltage (V): 4x 2-57

**RATINGS AND CERTIFICATIONS**  
Certified By: UR Listed  
IP rating: Dry / Damp



E9F231- COMPONENTS

E9A50007

DESCRIPTION

Sun - AISI 304 Stainless Steel Spike

GENERAL

Series: Sun  
Brand: Platek  
Division: Exterior

PHYSICAL

Diameter (mm): 101  
Diameter (in): 4  
Height (mm): 202  
Height (in): 7 <sup>15</sup>/<sub>16</sub>  
Fixture Finish: ABA / ANA  
Fixture Material: Metal

RATINGS AND CERTIFICATIONS

Certified By: Certified for North American Standards

PROJECT
TYPE
NOTES
QUANTITY
DATE



E9F231- COMPONENTS

E9A50049

DESCRIPTION

Visor for 4000 Pole for Target - 4500mm/177 3/16"

GENERAL

Series: Target  
Brand: Platek  
Division: Exterior

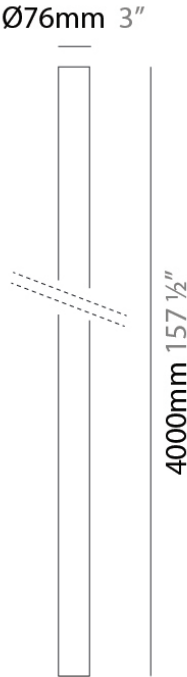
PHYSICAL

Diameter (mm): 76  
Diameter (in): 3  
Height (mm): 4500  
Height (in): 177 3/16  
Fixture Material: Metal

RATINGS AND CERTIFICATIONS

Certified By: Certified for North American Standards  
IP rating: IP65

PROJECT
TYPE
NOTES
QUANTITY
DATE



E9F231- COMPONENTS

E9A50050

DESCRIPTION

Visor for 6000 Pole for Target - 6800mm/267 11/16"

GENERAL

Series: Target  
Brand: Platek  
Division: Exterior

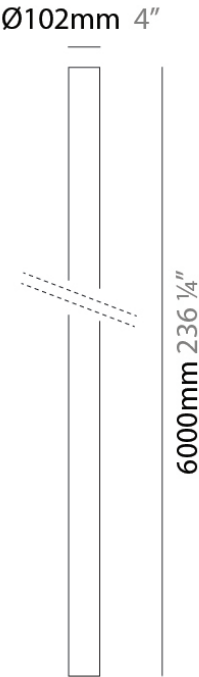
PHYSICAL

Diameter (mm): 102  
Diameter (in): 4  
Height (mm): 6800  
Height (in): 267 11/16  
Fixture Material: Metal

RATINGS AND CERTIFICATIONS

Certified By: Certified for North American Standards  
IP rating: IP65

PROJECT
TYPE
NOTES
QUANTITY
DATE



E9F231- COMPONENTS

PROJECT	
TYPE	
NOTES	
QUANTITY	
DATE	

ENCP8

DESCRIPTION

Empty Metal Enclosure for Driver - IP20 - Indoor Rated

GENERAL

Division: Architectural : Components

PHYSICAL

Shape: Rectangle

Length (mm): 305

Length (in): 12

Width (mm): 92

Width (in): 3 5⁄8

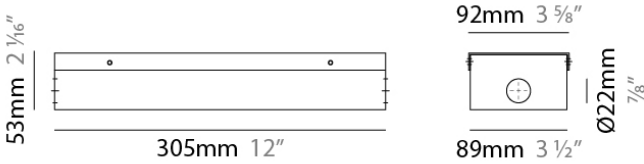
Height (mm): 54

Height (in): 2 1⁄8

Fixture Material: Metal

RATINGS AND CERTIFICATIONS

IP rating: IP20



### LEGEND

	floor-mounted		pivotal		special LED (upon request) RGB, RGBW, tunable, gold+, meat+, art+, fashion+
	wall and ceiling: recessed and surface mounted		rotating		warm dim / natural dimming LED
	ceiling-mounted and wall-mounted		illuminate tilted		rechargeable battery powered
	wall-mounted		color of suspension cable		fixture with natural vivid LED (upon request)
	omni-directional light distribution		length of suspension cable		color rendering index
	direct light distribution		reflector degree selection		color temperature
	direct/indirect light distribution		super spot		lumen (luminous flux)
	indirect light distribution		lens		efficacy (lumens per watt)
	asymmetric light distribution		lens pack		Unified Glare Rating (UGR) range from 5-40
	aura light distribution		shine ring		marine grade (AISI 316 stainless steel)
	round wall or ceiling cut-out		integrated shine ring with diffuser		walk on
	square wall or ceiling cut-out		free individual colors 01-29		drive on
	the supplied jig specifies the cutout dimensions		individual colors: 00 (free of charge), 01-25 (extra charge)		Dark Sky Compliance
	minimum distance (meters) lamp - object		luminaire part to be colored (F1)		Americans with Disabilities Act (less than 4" off the wall located between 27"-84" from floor)
	recessed depth		luminaire part to be colored (F2)		lamp protected against explosion
	ceiling thickness in mm		luminaire part to be colored (F3)		blown glass using traditional methods by master glass blower
	ceiling thickness selection		luminaire part to be colored (F4)		acoustic material
	dimmmable DP (phase), DV (0-10V), DD (dali), DS (step-dim)		luminaire part to be colored (F5)		protection class I, protection insulation
	included or excluded LED driver/transformer/control gear		color of 3-circuit adaptor		protection class II, protection insulation
	separately switchable		indirect diffuser		ETL Certified to UL and CSA Standards
	sensor		direct diffuser		UL Certified to UL and CSA Standards
	remote control		ball-proof (upon request)		CSA Certified to UL and CSA Standards
	available upon request		accessory		Certified for North American Standards

### IP RATING

	protected against ingress of solid bodies greater than 12.5mm (finger)
	protected against ingress of solid bodies greater than 2.5mm protected against sprays of water up to 60 degrees from the vertical (rain)
	protected against ingress of solid bodies greater than 1mm (wire) no protection against the ingress of moisture
	protected against ingress of solid bodies greater than 1mm (wire) protected against sprays of water up to 60 degrees from the vertical (rain)
	protected against ingress of solid bodies greater than 1mm (wire) protected against water splashed from all directions
	protected against limited ingress of dust (wet rooms/covered outdoor areas) protected against water splashed from all directions
	protected against ingress of dust protected against jets of water
	protected against ingress of dust protected against powerful jets of water or heavy seas
	protected against ingress of dust protected against immersion of water between 15cm - 1m for 30 minutes
	protected against ingress of dust protected against immersion of water under pressure for long periods

### IK RATING

	protected against 0.14 joules impact (equivalent to 0.25kg mass dropped from 56mm above the surface)
	protected against 0.2 joules impact (equivalent to 0.25kg mass dropped from 80mm above the surface)
	protected against 0.35 joules impact (equivalent to 0.25kg mass dropped from 140mm above the surface)
	protected against 0.5 joules impact (equivalent to 0.25kg mass dropped from 200mm above the surface)
	protected against 0.7 joules impact (equivalent to 0.25kg mass dropped from 280mm above the surface)
	protected against 1 joules impact (equivalent to 0.25kg mass dropped from 400mm above the surface)
	protected against 2 joules impact (equivalent to 0.5kg mass dropped from 400mm above the surface)
	protected against 5 joules impact (equivalent to 1.7kg mass dropped from 300mm above the surface)
	protected against 10 joules impact (equivalent to 5.0kg mass dropped from 200mm above the surface)
	protected against 20 joules impact (equivalent to 5.0kg mass dropped from 400mm above the surface)