

D10SP-MOD-SYS COMPONENTS

D109010-

DESCRIPTION

Double Lighthead - 1 x 4.6W LED Citizen - 2700K - 376lm

GENERAL

Series: Sparks  
Subseries: Sparks Double Head  
Brand: Quasar  
Division: Design  
Subcategory: Ambient

PHYSICAL

Shape: Abstract  
Length (mm): 225  
Length (in): 8.9  
Height (mm): 340  
Height (in): 13.4  
Light Distribution: Omnidirectional  
Fixture Finish: WHI / PAL  
Fixture Material: Metal

ELECTRICAL

Lamp Type: LED  
Input Wattage (W): 4.6  
Total Output Wattage (W): 3.2  
Dimming: 0-10V Dimming / Phase Dimming (120Vac Only)  
Driver Included: No  
Driver Location: Remote  
Driver Type: Constant Voltage - Universal - Phase dimming @120Vac only  
Driver Class: Class 2  
Input Voltage (V): 120 - 277  
Output Voltage (V): 24  
Upon Request: 0-10Vdc dimming / Phase dimming @120Vac only / 277Vac

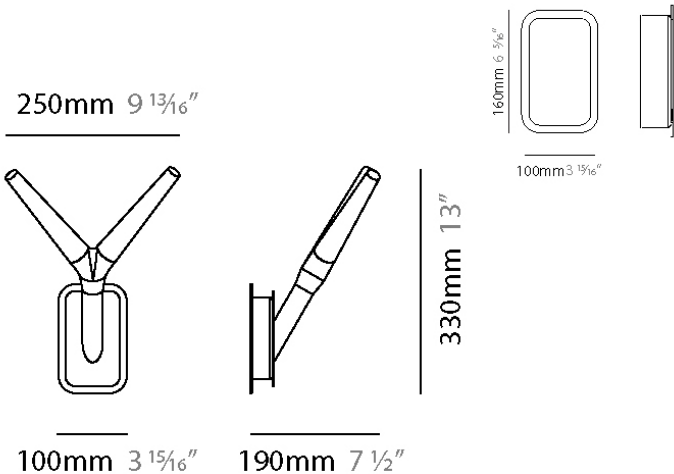
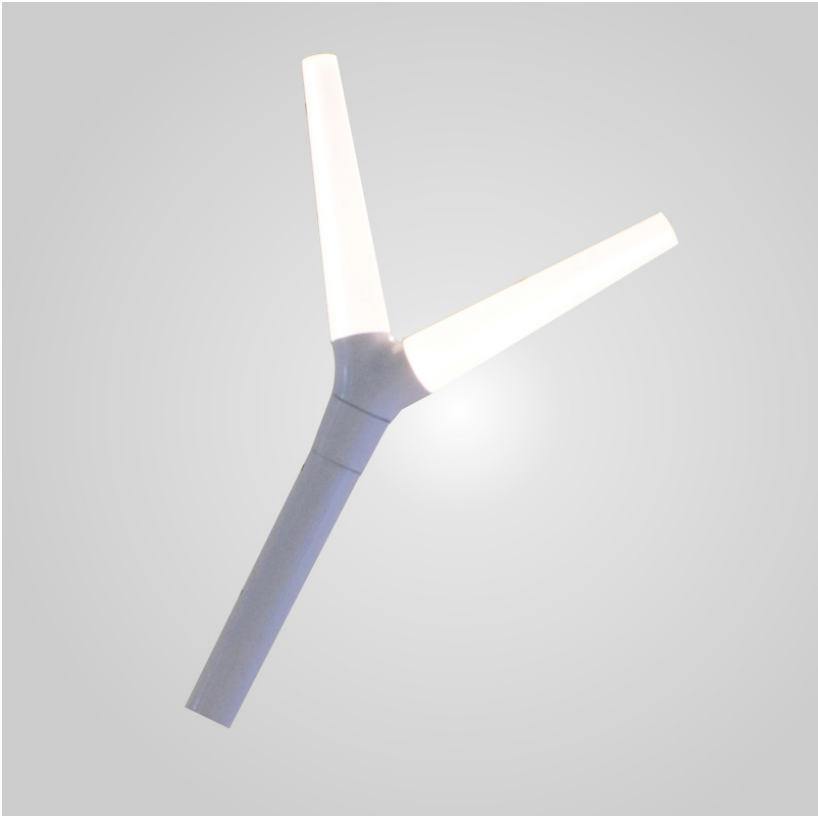
LED

Delivered Lumen Range: 100 - 499 lm  
Number of LEDs: 1  
Color Temperature (°K): 2700  
Max. Delivered Lumen (lm): 376  
CRI: >90 CRI  
Lamp Life (hrs): 50000

RATINGS AND CERTIFICATIONS

Certified By: Certified for North American Standards  
IP rating: IP20

PROJECT	
TYPE	
NOTES	
QUANTITY	
DATE	



D10SP-MOD-SYS COMPONENTS

D109011-

DESCRIPTION

Sparks Triple Lighthead - 1 x 4.6W LED Citizen - 2700K - 326lm

GENERAL

Series: Sparks  
Subseries: Sparks Triple Head  
Brand: Quasar  
Division: Design  
Subcategory: Ambient

PHYSICAL

Shape: Abstract  
Length (mm): 270  
Length (in): 10 7⁄8  
Height (mm): 330  
Height (in): 13  
Light Distribution: Omnidirectional  
Fixture Finish: WHI / PAL  
Fixture Material: Metal

ELECTRICAL

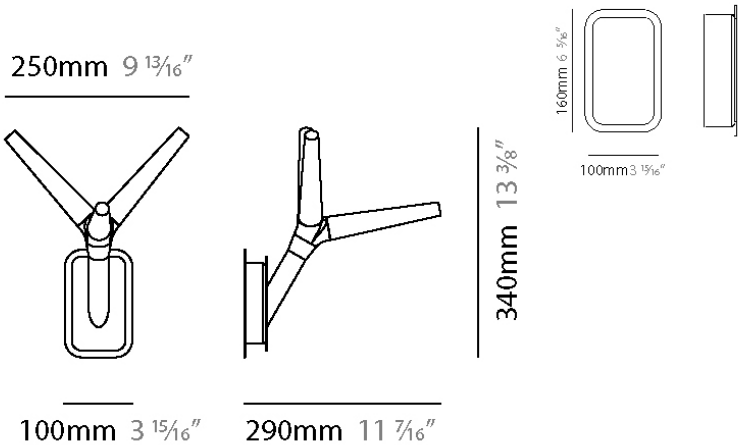
Lamp Type: LED  
Input Wattage (W): 4.6  
Total Output Wattage (W): 3.2  
Dimming: 0-10V Dimming / Phase Dimming (120Vac Only)  
Driver Included: No  
Driver Location: Remote  
Driver Type: Constant Voltage - Universal - Phase dimming @120Vac only  
Driver Class: Class 2  
Input Voltage (V): 120 - 277  
Output Voltage (V): 24  
Upon Request: 0-10Vdc dimming / Phase dimming @120Vac only / Non-dimming @277Vac

LED

Number of LEDs: 1  
Color Temperature (°K): 2700  
Max. Delivered Lumen (lm): 326  
CRI: >90 CRI  
Lamp Life (hrs): 50000

RATINGS AND CERTIFICATIONS

Certified By: Certified for North American Standards  
IP rating: IP20



D10SP-MOD-SYS COMPONENTS

PROJECT
TYPE
NOTES
QUANTITY
DATE

D109012-

DESCRIPTION

Sparks T Connector - 120mm / 4 3/4" x 140mm 5 1/2" - 2 x 110°, 1 x 140° -

GENERAL

Series: Sparks  
Brand: Quasar  
Division: Design

PHYSICAL

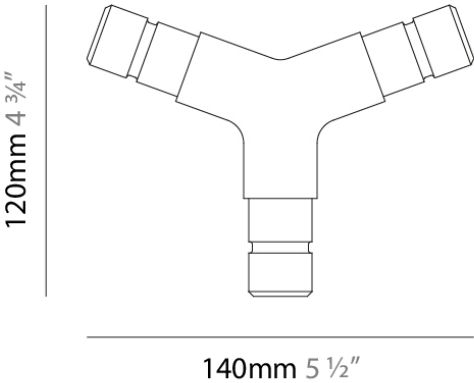
Width (mm): 140  
Width (in): 5 7/8  
Height (mm): 120  
Height (in): 4 3/4  
Fixture Finish: WHI / PAL  
Fixture Material: Metal

ELECTRICAL

Driver Included: No

RATINGS AND CERTIFICATIONS

Certified By: Certified for North American Standards  
IP rating: IP20



D10SP-MOD-SYS COMPONENTS

PROJECT	
TYPE	
NOTES	
QUANTITY	
DATE	

D109013-

DESCRIPTION

Sparks Y Connector - 120mm / 4 3/4" x 150mm / 5 7/8" - 2 x 140°, 1 x 80°

GENERAL

Series: Sparks  
Brand: Quasar  
Division: Design

PHYSICAL

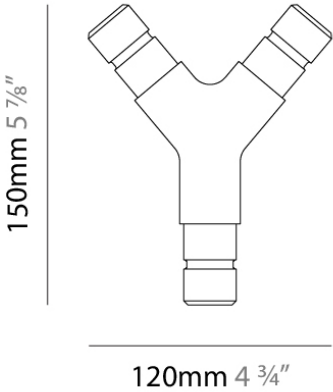
Width (mm): 120  
Width (in): 4 3/4  
Height (mm): 150  
Height (in): 5 7/8  
Fixture Finish: WHI / PAL  
Fixture Material: Metal

ELECTRICAL

Driver Included: No

RATINGS AND CERTIFICATIONS

Certified By: Certified for North American Standards  
IP rating: IP20



D10SP-MOD-SYS COMPONENTS

PROJECT	
TYPE	
NOTES	
QUANTITY	
DATE	

D109014-

DESCRIPTION

Sparks X Connector - 314mm / 12 3/8" x 360mm / 14 3/16" -

GENERAL

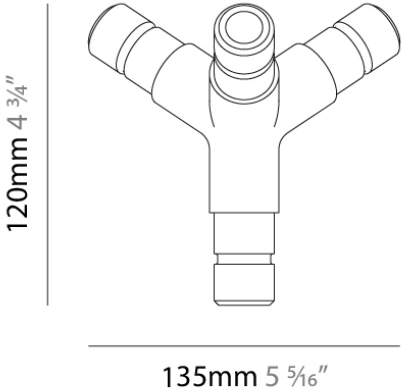
Series: Sparks  
Brand: Quasar  
Division: Design

PHYSICAL

Width (mm): 135  
Width (in): 5 5/16  
Height (mm): 120  
Height (in): 4 3/4  
Fixture Finish: WHI / PAL  
Fixture Material: Metal

RATINGS AND CERTIFICATIONS

Certified By: Certified for North American Standards  
IP rating: IP20



D10SP-MOD-SYS COMPONENTS

PROJECT	
TYPE	
NOTES	
QUANTITY	
DATE	

D109015-

DESCRIPTION

Sparks - Wall/Ceiling Connector with Cable - 226mm / 1 3/16" x 30mm / 8 7/8" -

GENERAL

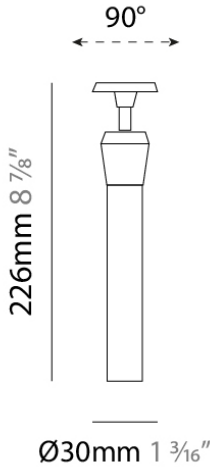
Series: Sparks  
Brand: Quasar  
Division: Design

PHYSICAL

Diameter (mm): 30  
Diameter (in): 1 3/16  
Height (mm): 226  
Height (in): 8 7/8  
Fixture Finish: WHI / PAL  
Fixture Material: Metal

RATINGS AND CERTIFICATIONS

Certified By: Certified for North American Standards  
IP rating: IP20



D10SP-MOD-SYS COMPONENTS

PROJECT
TYPE
NOTES
QUANTITY
DATE

D109016-

DESCRIPTION

Sparks - Wall/Ceiling Connector - 226mm / 1 3/16" x 30mm / 8 7/8" -

GENERAL

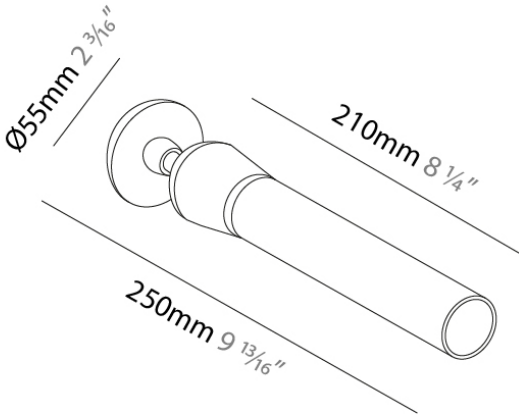
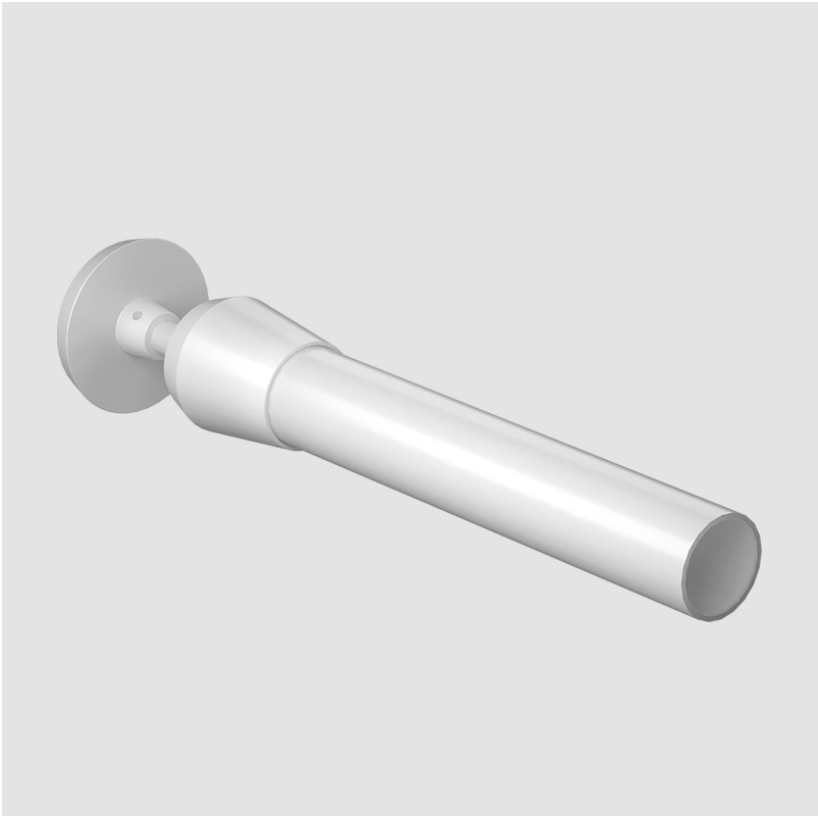
Series: Sparks  
Brand: Quasar  
Division: Design

PHYSICAL

Diameter (mm): 30  
Diameter (in): 1 3/16  
Height (mm): 226  
Height (in): 8 7/8  
Fixture Finish: WHI / PAL  
Fixture Material: Metal

RATINGS AND CERTIFICATIONS

Certified By: Certified for North American Standards  
IP rating: IP20



D10SP-MOD-SYS COMPONENTS

PROJECT

TYPE

NOTES

QUANTITY

DATE

D109017-

DESCRIPTION

Sparks Tube - 350mm / 13 3/4"

GENERAL

Series: Sparks

Brand: Quasar

Division: Design

PHYSICAL

Diameter (mm): 30

Diameter (in): 1 3/16

Length (mm): 350

Length (in): 13 3/4

Fixture Finish: WHI / PAL

Fixture Material: Metal

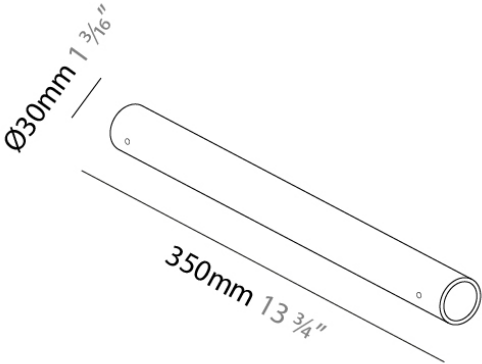
ELECTRICAL

Driver Included: No

RATINGS AND CERTIFICATIONS

Certified By: Certified for North American Standards

IP rating: IP20





D10SP-MOD-SYS COMPONENTS

PROJECT
TYPE
NOTES
QUANTITY
DATE

D109018-

DESCRIPTION

Sparks System - LED Driver - 24Vdc - Max. 100W - Dimmable

GENERAL

Series: Sparks  
Brand: Quasar  
Division: Design

PHYSICAL

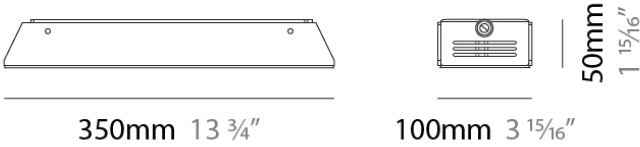
Length (mm): 350  
Length (in): 13 3/4  
Width (mm): 100  
Width (in): 3 15/16  
Height (mm): 50  
Height (in): 1 15/16  
Fixture Finish: WHI / PAL  
Fixture Material: Metal

ELECTRICAL

Lamp Type: LED  
Dimming: 0-10V Dimming / Phase Dimming (120Vac Only)  
Driver Included: Yes  
Driver Location: Integrated  
Driver Type: Constant Voltage - Universal - Phase dimming @120Vac only  
Driver Class: Class 2  
Input Voltage (V): 120 - 277  
Output Voltage (V): 24  
Upon Request: 0-10Vdc dimming / Phase dimming @120Vac only / Non-dimming @277Vac

RATINGS AND CERTIFICATIONS

Certified By: Certified for North American Standards  
IP rating: IP20



D10SP-MOD-SYS COMPONENTS

D109019-

DESCRIPTION

Suspension Cable - 4000mm / 157 1/2" -

GENERAL

Series: Sparks

Brand: Quasar

Division: Design

PHYSICAL

Length (mm): 4000

Length (in): 157 1/2

Fixture Finish: WHI / PAL

ELECTRICAL

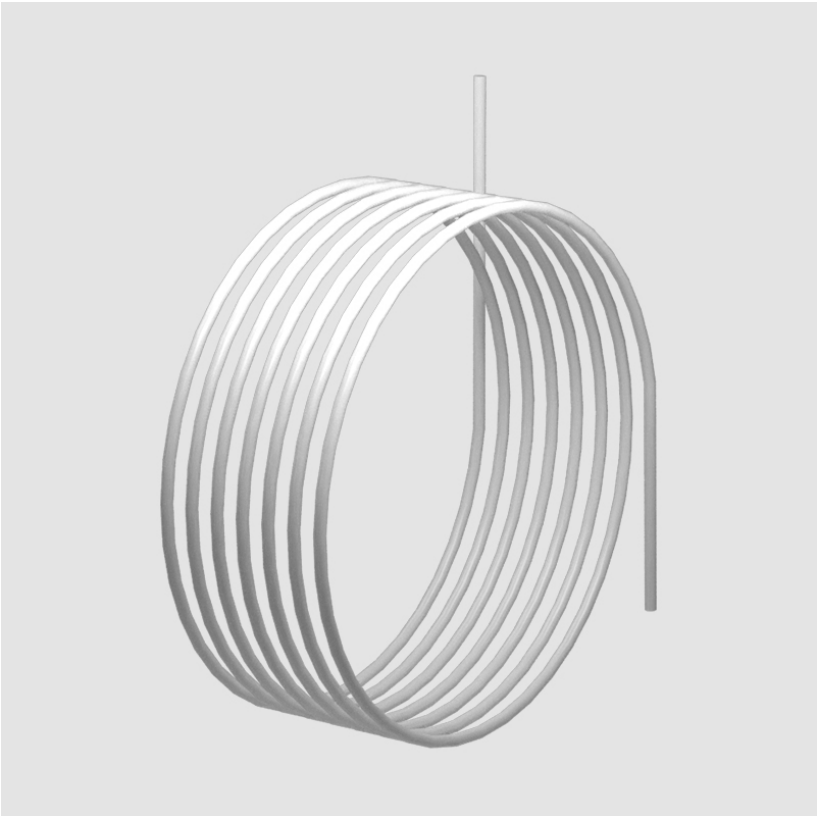
Driver Included: No

RATINGS AND CERTIFICATIONS

Certified By: Certified for North American Standards

IP rating: IP20

PROJECT
TYPE
NOTES
QUANTITY
DATE



## D10SP-MOD-SYS COMPONENTS

PROJECT

TYPE

NOTES

QUANTITY

DATE

### LEGEND

	floor-mounted		pivotal		special LED (upon request) RGB, RGBW, tunable, gold+, meat+, art+, fashion+
	wall and ceiling: recessed and surface mounted		rotating		warm dim / natural dimming LED
	ceiling-mounted and wall-mounted		illuminate tilted		rechargeable battery powered
	wall-mounted		color of suspension cable		fixture with natural vivid LED (upon request)
	omni-directional light distribution		length of suspension cable		color rendering index
	direct light distribution		reflector degree selection		color temperature
	direct/indirect light distribution		super spot		lumen (luminous flux)
	indirect light distribution		lens		efficacy (lumens per watt)
	asymmetric light distribution		lens pack		Unified Glare Rating (UGR) range from 5-40
	aura light distribution		shine ring		marine grade (AISI 316 stainless steel)
	round wall or ceiling cut-out		integrated shine ring with diffuser		walk on
	square wall or ceiling cut-out		free individual colors 01-29		drive on
	the supplied jig specifies the cutout dimensions		individual colors: 00 (free of charge), 01-25 (extra charge)		Dark Sky Compliance
	minimum distance (meters) lamp - object		luminaire part to be colored (F1)		Americans with Disabilities Act (less than 4" off the wall located between 27"-84" from floor)
	recessed depth		luminaire part to be colored (F2)		lamp protected against explosion
	ceiling thickness in mm		luminaire part to be colored (F3)		blown glass using traditional methods by master glass blower
	ceiling thickness selection		luminaire part to be colored (F4)		acoustic material
	dimmable DP (phase), DV (0-10V), DD (dali), DS (step-dim)		luminaire part to be colored (F5)		protection class I, protection insulation
	included or excluded LED driver/transformer/control gear		color of 3-circuit adaptor		protection class II, protection insulation
	separately switchable		indirect diffuser		ETL Certified to UL and CSA Standards
	sensor		direct diffuser		UL Certified to UL and CSA Standards
	remote control		ball-proof (upon request)		CSA Certified to UL and CSA Standards
	available upon request		accessory		Certified for North American Standards

### IP RATING

	protected against ingress of solid bodies greater than 12.5mm (finger)
	protected against ingress of solid bodies greater than 2.5mm protected against sprays of water up to 60 degrees from the vertical (rain)
	protected against ingress of solid bodies greater than 1mm (wire) no protection against the ingress of moisture
	protected against ingress of solid bodies greater than 1mm (wire) protected against sprays of water up to 60 degrees from the vertical (rain)
	protected against ingress of solid bodies greater than 1mm (wire) protected against water splashed from all directions
	protected against limited ingress of dust (wet rooms/covered outdoor areas) protected against water splashed from all directions
	protected against ingress of dust protected against jets of water
	protected against ingress of dust protected against powerful jets of water or heavy seas
	protected against ingress of dust protected against immersion of water between 15cm - 1m for 30 minutes
	protected against ingress of dust protected against immersion of water under pressure for long periods

### IK RATING

	protected against 0.14 joules impact (equivalent to 0.25kg mass dropped from 56mm above the surface)
	protected against 0.2 joules impact (equivalent to 0.25kg mass dropped from 80mm above the surface)
	protected against 0.35 joules impact (equivalent to 0.25kg mass dropped from 140mm above the surface)
	protected against 0.5 joules impact (equivalent to 0.25kg mass dropped from 200mm above the surface)
	protected against 0.7 joules impact (equivalent to 0.25kg mass dropped from 280mm above the surface)
	protected against 1 joules impact (equivalent to 0.25kg mass dropped from 400mm above the surface)
	protected against 2 joules impact (equivalent to 0.5kg mass dropped from 400mm above the surface)
	protected against 5 joules impact (equivalent to 1.7kg mass dropped from 300mm above the surface)
	protected against 10 joules impact (equivalent to 5.0kg mass dropped from 200mm above the surface)
	protected against 20 joules impact (equivalent to 5.0kg mass dropped from 400mm above the surface)