

A3ID100-SUR-SYS COMPONENTS SURFACE

PROJECT
TYPE
NOTES
QUANTITY
DATE

A32401-

DESCRIPTION

Idaho 100 - Surface Profile - Max 3,000mm / 118 1/8" max
Aluminum Profile

GENERAL

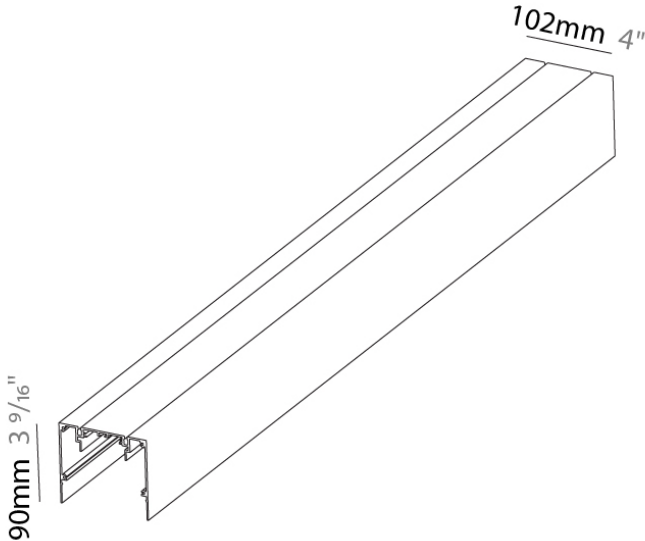
Series: Idaho
Subseries: Idaho 100
Brand: Prolicht
Division: Architectural
Mounting Type: Surface
Mounting Location: Ceiling
Subcategory: Profile

PHYSICAL

Shape: Rectangle
Length (mm): 1000
Length (in): 39 3/8
Width (mm): 102
Width (in): 4
Height (mm): 90
Height (in): 3 9/16
Weight (kg): 2.25
Weight (lbs): 4.96
Fixture Finish: ANA / SSR / BKV / CWI / CRY / HAB / MSR / UFT / ITA /
RUA / OGR / FTG / MYG / RWR / LOD / PUS / FRO / FUP / KIA / POP /
BLS / SPG / MEY / GOH / GUM / CHC / COM / ABZ / JAG / OBR / MOS /
ROR
Fixture Material: Aluminum

RATINGS AND CERTIFICATIONS

Certified By: Certified for North American Standards
IP rating: IP20



max. 3000mm 118 1/8"



A3ID100-SUR-SYS COMPONENTS

A380009-

DESCRIPTION

Idaho 100 System - Surface/Suspension Profile End Cap

GENERAL

Series: Idaho
Subseries: Idaho 100
Brand: Prolicht
Division: Architectural

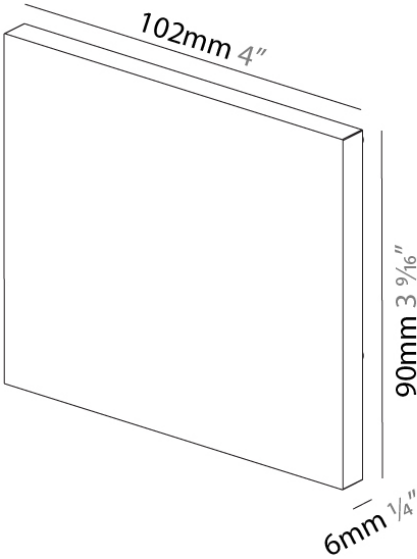
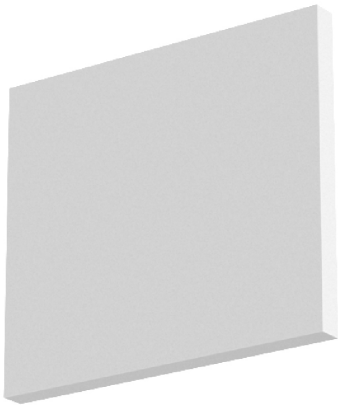
PHYSICAL

Shape: Rectangle
Length (mm): 102
Length (in): 4
Width (mm): 6
Width (in): 1/4
Height (mm): 90
Height (in): 3 9/16
Weight (kg): 0.179
Weight (lbs): 0.39
Fixture Finish: SSR / BKV / CWI / CRY / HAB / LAG / UFT / ITA / RUA /
RUR / MIC / FTG / MYG / TWT / LOD / PUS / FRO / FUP / KIA / POP /
BLS / SPG / MEY / GOH / GUM / CHC / COM / ABZ / JAG / OBR / MOS /
ROR
Fixture Material: Aluminum

RATINGS AND CERTIFICATIONS

Certified By: Certified for North American Standards
IP rating: IP20

PROJECT
TYPE
NOTES
QUANTITY
DATE



A3ID100-SUR-SYS COMPONENTS

A3817100

DESCRIPTION

Idaho 100 System - Trimless Micro-Prism Diffuser per Meter - Max 3000mm / 118 1/8"

GENERAL

Series: Idaho
Subseries: Idaho 100
Brand: Prolicht
Division: Architectural

PHYSICAL

Shape: Rectangle
Length (mm): 1000
Length (in): 39 3/8
Width (mm): 99
Width (in): 3 7/8
Height (mm): 27
Height (in): 1 1/16
Weight (kg): 0.73
Weight (lbs): 1.61
Diffuser: PMMA - Micro-Prism
Fixture Material: Metal

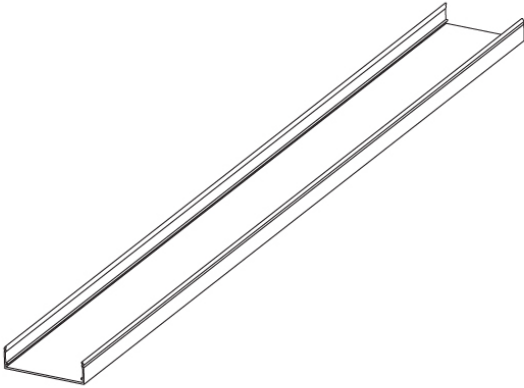
ELECTRICAL

Lamp Type: LED (Zhaga Standard)

RATINGS AND CERTIFICATIONS

Certified By: Certified for North American Standards
IP rating: IP20

PROJECT	
TYPE	
NOTES	
QUANTITY	
DATE	



max. 3000mm 118 1/8"



A3ID100-SUR-SYS COMPONENTS

A38172-

DESCRIPTION

Idaho 100 System - Light Insert - 1140mm - 20W / 12.8W [O/P]
(3500K) - LED (Zhaga Standard) - 3000K / 3500K / 4000K

GENERAL

Series: Idaho
Subseries: Idaho 100
Brand: Prolicht
Division: Architectural

PHYSICAL

Shape: Rectangle
Length (mm): 1140
Length (in): 44 7/8
Width (mm): 87
Width (in): 3 7/16
Height (mm): 65
Height (in): 2 9/16
Light Distribution: Direct
Weight (kg): 2.424
Weight (lbs): 5.34
Fixture Material: Metal

ELECTRICAL

Input Wattage Range: 20 - 29 W
Lamp Type: LED (Zhaga Standard)
Input Wattage (W): 20
Total Output Wattage (W): 16 / 12.8 (3500K)
Dimming: Non-Dimming / Phase Dimming (120Vac only) / 0-10V Dimming
Driver Included: Yes
Driver Location: Integrated
Driver Type: Constant Current - 120 / 277Vac
Driver Class: Class 2
Input Voltage (V): 120 - 277
Constant Current (MA): 350 / 400 (3500K)

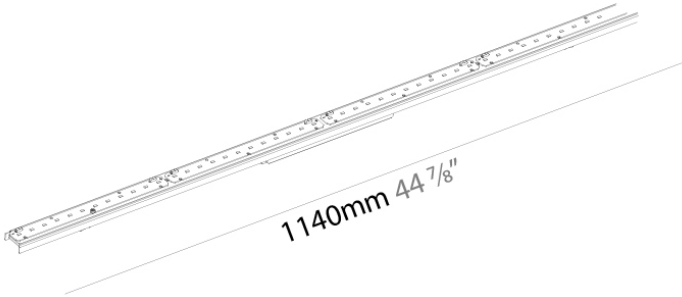
LED

Delivered Lumen Range: 2000 - 2999 lm
Color Temperature (°K): 3000 / 3500 / 4000
Max. Delivered Lumen (lm): 2175 / 2252 / 2298
Nominal Lumen (lm): 2840 / 2940 / 3000
CRI: >80 CRI
Efficiency (%): 0.72
Lamp Life (hrs): 50000
Upon Request: Special Color Temperature RGB-W Tunable White CRI (no minimum qty) price increase + longer lead time

RATINGS AND CERTIFICATIONS

Certified By: Certified for North American Standards
IP rating: IP20

PROJECT
TYPE
NOTES
QUANTITY
DATE



A3ID100-SUR-SYS COMPONENTS

A38176-

DESCRIPTION

Idaho 100 System - Light Insert - 1420mm/55 7/8" - 25W / 16W [O/P] (3500K) - LED (Zhaga Standard) - 3000K / 3500K / 4000K

GENERAL

Series: Idaho
Subseries: Idaho 100
Brand: Prolicht
Division: Architectural

PHYSICAL

Shape: Rectangle
Length (mm): 1420
Length (in): 55 7/8
Width (mm): 87
Width (in): 3 7/16
Height (mm): 65
Height (in): 2 9/16
Light Distribution: Direct
Weight (kg): 2.75
Weight (lbs): 6.06
Fixture Material: Metal

ELECTRICAL

Input Wattage Range: 20 - 29 W
Lamp Type: LED (Zhaga Standard)
Input Wattage (W): 25
Total Output Wattage (W): 20 / 16 (3500K)
Dimming: Non-Dimming / Phase Dimming (120Vac only) / 0-10V Dimming
Driver Included: Yes
Driver Location: Integrated
Driver Type: Constant Current - 120 / 277Vac
Driver Class: Class 2
Input Voltage (V): 120 - 277
Constant Current (MA): 350 / 500 (3500K)

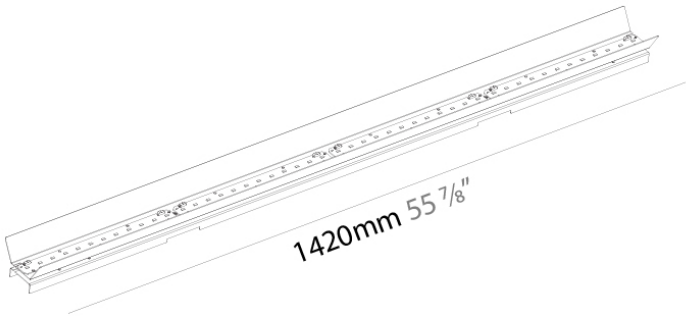
LED

Delivered Lumen Range: 2000 - 2999 lm
Color Temperature (°K): 3000 / 3500 / 4000
Max. Delivered Lumen (lm): 2719 / 2815 / 2872
Nominal Lumen (lm): 3550 / 3675 / 3750
CRI: >80 CRI
Efficiency (%): 0.72
Lamp Life (hrs): 50000
Upon Request: Special Color Temperature RGB-W Tunable White CRI (no minimum qty) price increase + longer lead time

RATINGS AND CERTIFICATIONS

Certified By: Certified for North American Standards
IP rating: IP20

PROJECT
TYPE
NOTES
QUANTITY
DATE



A3ID100-SUR-SYS COMPONENTS

A38180-

DESCRIPTION

Idaho 100 System - Light Insert - 1700mm - 30W / 19.2W [O/P]
(3500K) - LED (Zhaga Standard) - 3000K / 3500K / 4000K

GENERAL

Series: Idaho
Subseries: Idaho 100
Brand: Prolicht
Division: Architectural

PHYSICAL

Shape: Rectangle
Length (mm): 1700
Length (in): 66 15/16
Width (mm): 87
Width (in): 3 7/16
Height (mm): 65
Height (in): 2 9/16
Light Distribution: Direct
Weight (kg): 3.2
Weight (lbs): 7.05
Fixture Material: Metal

ELECTRICAL

Input Wattage Range: 30 - 49 W
Lamp Type: LED (Zhaga Standard)
Input Wattage (W): 30
Total Output Wattage (W): 24 / 19.2 (3500K)
Dimming: Non-Dimming / Phase Dimming (120Vac only) / 0-10V Dimming
Driver Included: Yes
Driver Location: Integrated
Driver Type: Constant Current - 120 / 277Vac
Driver Class: Class 2
Input Voltage (V): 120 - 277
Constant Current (MA): 350 / 600 (3500K)

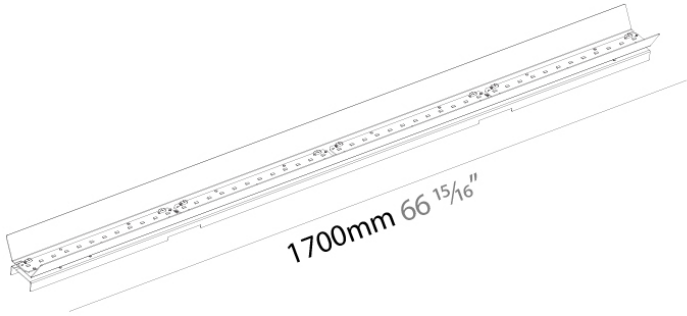
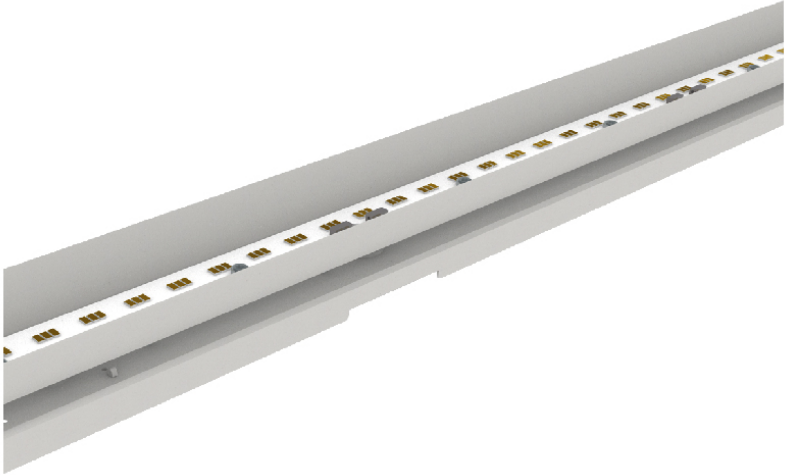
LED

Delivered Lumen Range: 2000 - 3999 lm
Color Temperature (°K): 3000 / 3500 / 4000
Max. Delivered Lumen (lm): 3263 / 3378 / 3447
Nominal Lumen (lm): 4260 / 4410 / 4500
CRI: >80 CRI
Efficiency (%): 0.72
Lamp Life (hrs): 50000
Upon Request: Special Color Temperature RGB-W Tunable White CRI (no minimum qty) price increase + longer lead time

RATINGS AND CERTIFICATIONS

Certified By: Certified for North American Standards
IP rating: IP20

PROJECT
TYPE
NOTES
QUANTITY
DATE



A3ID100-SUR-SYS COMPONENTS

A38184-

DESCRIPTION

Idaho 100 System - Idaline Light Insert - 1980mm / 77 15/16" - 34.3W / 22.4W [O/P] (3500K) - LED (Zhaga Standard) - 3000K / 3500K / 4000K - Dimmable.

GENERAL

Series: Idaho
Subseries: Idaho 100
Brand: Prolicht
Division: Architectural

PHYSICAL

Shape: Rectangle
Length (mm): 1980
Length (in): 77 15/16
Width (mm): 87
Width (in): 3 7/16
Height (mm): 65
Height (in): 2 9/16
Light Distribution: Direct
Weight (kg): 3.7
Weight (lbs): 8.16
Fixture Material: Metal

ELECTRICAL

Input Wattage Range: 30 - 49 W
Lamp Type: LED (Zhaga Standard)
Input Wattage (W): 34.3
Total Output Wattage (W): 28 / 22.4 (3500K)
Dimming: 0-10V Dimming / Phase Dimming (120Vac Only)
Driver Included: Yes
Driver Location: Integrated
Driver Type: Constant Current - 120 / 277Vac
Driver Class: Class 2
Input Voltage (V): 120 - 277
Constant Current (MA): 350 / 700 (3500K)

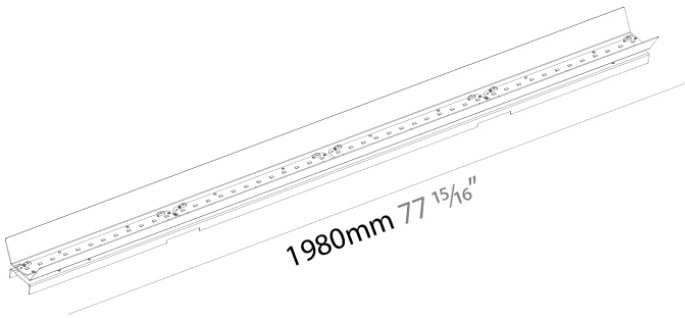
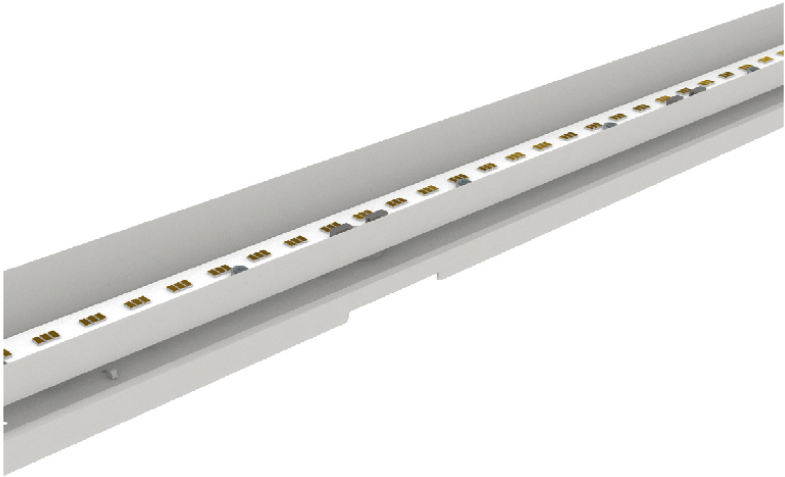
LED

Delivered Lumen Range: 2000 - 3999 lm
Color Temperature (°K): 3000 / 3500 / 4000
Max. Delivered Lumen (lm): 3467 / 3529 / 3601
Nominal Lumen (lm): 4527 / 4608 / 4702
CRI: >90 CRI
Efficiency (%): 0.72
Lamp Life (hrs): 50000
Upon Request: Special Color Temperature RGB-W Tunable White CRI (no minimum qty) price increase + longer lead time

RATINGS AND CERTIFICATIONS

Certified By: Certified for North American Standards
IP rating: IP20

PROJECT
TYPE
NOTES
QUANTITY
DATE



A3ID100-SUR-SYS COMPONENTS

A38188-

DESCRIPTION

Idaho 100 System - Light Insert - 2270mm/ 89 3/8" - 39.2W LED (Zhaga Standard) - 3000K / 3500K / 4000K - Dimmable

GENERAL

Series: Idaho
Subseries: Idaho 100
Brand: Prolicht
Division: Architectural

PHYSICAL

Shape: Rectangle
Length (mm): 2270
Length (in): 89 3/8
Width (mm): 87
Width (in): 3 7/16
Height (mm): 65
Height (in): 2 9/16
Light Distribution: Direct
Weight (kg): 4.181
Weight (lbs): 9.22
Fixture Material: Metal

ELECTRICAL

Input Wattage Range: 30 - 49 W
Lamp Type: LED (Zhaga Standard)
Input Wattage (W): 39.2
Total Output Wattage (W): 32 / 22.4 (3500K)
Dimming: 0-10V Dimming / Phase Dimming (120Vac Only)
Driver Included: Yes
Driver Location: Integrated
Driver Type: Constant Current - 120 / 277Vac
Driver Class: Class 2
Input Voltage (V): 120 - 277
Constant Current (mA): 350 / 800 (3500K)

LED

Delivered Lumen Range: 3000 - 4999 lm
Color Temperature (°K): 3000 / 3500 / 4000
Max. Delivered Lumen (lm): 3963 / 4034 / 4116
Nominal Lumen (lm): 5173 / 5266 / 5373
CRI: >90 CRI
Efficiency (%): 0.72
Lamp Life (hrs): 50000
Upon Request: Special Color Temperature RGB-W Tunable White CRI (no minimum qty) price increase + longer lead time

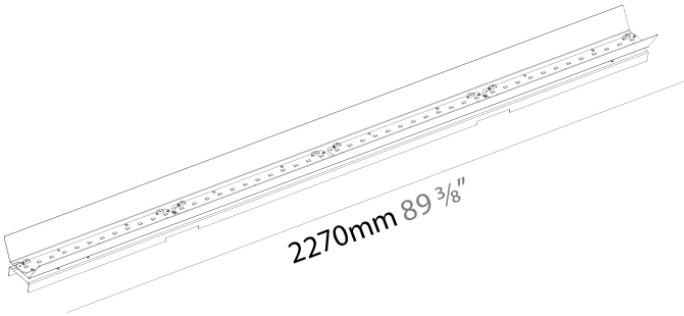
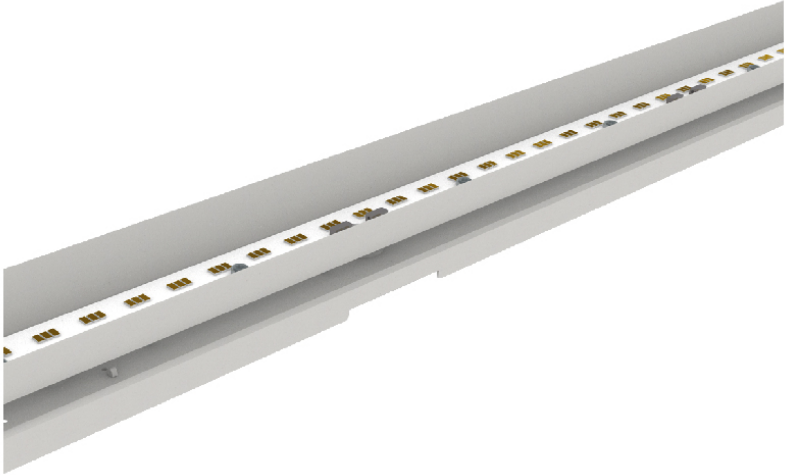
OPTICAL

Beam Angle: 78

RATINGS AND CERTIFICATIONS

Certified By: Certified for North American Standards
IP rating: IP20

PROJECT
TYPE
NOTES
QUANTITY
DATE



A3ID100-SUR-SYS COMPONENTS

A38608-

DESCRIPTION

Idaho 100 System - 1 Spot Light Insert - 9.9W LED (Zhaga Standard) - 2700K / 3000K / 3500K / 4000K - Reflectors 20° / 40° / 60°

GENERAL

Series: Idaho
Subseries: Idaho 100
Brand: Prolicht
Division: Architectural
Subcategory: Spots

PHYSICAL

Length (mm): 350
Length (in): 13 3/4
Width (mm): 86
Width (in): 3 3/8
Height (mm): 68
Height (in): 2 11/16
Light Distribution: Direct
Weight (kg): 0.459
Weight (lbs): 1.01
Fixture Finish: SSR / BKV / CWI / CRY / HAB / LAG / UFT / ITA / RUA / RUR / MIC / FTG / MYG / TWT / LOD / PUS / FRO / FUP / KIA / POP / BLS / SPG / MEY / GOH / GUM / CHC / COM / ABZ / JAG / OBR / MOS / ROR
Fixture Material: Aluminum Die Cast

ELECTRICAL

Input Wattage Range: 10 - 19 W
Lamp Type: LED (Zhaga Standard)
Input Wattage (W): 9.9
Total Output Wattage (W): 8.9
Dimming: Non-Dimming / Phase Dimming (120Vac only) / 0-10V Dimming
Driver Included: Yes
Driver Location: Integrated
Driver Type: Constant Current - Universal
Driver Class: Class 2
Input Voltage (V): 120 - 277
Constant Current (mA): 350

LED

Delivered Lumen Range: 500 - 999 lm
Color Temperature (°K): 2700 / 3000 / 3500 / 4000
Max. Delivered Lumen (lm): 660 / 680 / 715 / 730
Nominal Lumen (lm): 983 / 1020 / 1072 / 1094
CRI: >90 CRI
Efficiency (%): 0.884
Lamp Life (hrs): 50000

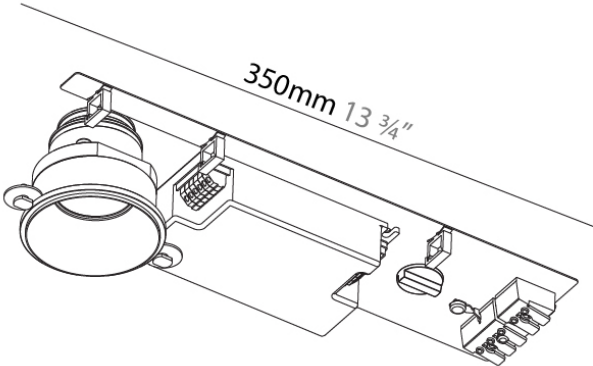
OPTICAL

Reflector°: 20 / 40 / 60

RATINGS AND CERTIFICATIONS

Certified By: Certified for North American Standards
IP rating: IP20

PROJECT	
TYPE	
NOTES	
QUANTITY	
DATE	



A3ID100-SUR-SYS COMPONENTS

A38611-

DESCRIPTION

Idaho 100 System - 2 Spot Light Insert - 19.8W LED (Zhaga Standard) - 2700K / 3000K / 3500K / 4000K - Reflectors 20° / 40° / 60°

GENERAL

Series: Idaho
Subseries: Idaho 100
Brand: Prolicht
Division: Architectural
Subcategory: Spots

PHYSICAL

Length (mm): 450
Length (in): 17 11/16
Width (mm): 86
Width (in): 3 3/8
Height (mm): 68
Height (in): 2 11/16
Light Distribution: Direct
Weight (kg): 0.66
Weight (lbs): 1.46
Fixture Finish: SSR / BKV / CWI / CRY / HAB / LAG / UFT / ITA / RUA / RUR / MIC / FTG / MYG / TWT / LOD / PUS / FRO / FUP / KIA / POP / BLS / SPG / MEY / GOH / GUM / CHC / COM / ABZ / JAG / OBR / MOS / ROR
Fixture Material: Aluminum

ELECTRICAL

Input Wattage Range: 10 - 19 W
Lamp Type: LED (Zhaga Standard)
Input Wattage (W): 19.8
Total Output Wattage (W): 17.8
Dimming: Non-Dimming / Phase Dimming (120Vac only) / 0-10V Dimming
Driver Included: Yes
Driver Location: Integrated
Driver Type: Constant Current - Universal
Driver Class: Class 2
Input Voltage (V): 120 - 277
Constant Current (mA): 350

LED

Delivered Lumen Range: 1000 - 1999 lm
Color Temperature (°K): 2700 / 3000 / 3500 / 4000
Max. Delivered Lumen (lm): 1320 / 1370 / 1441 / 1470
Nominal Lumen (lm): 1966 / 2040 / 2144 / 2188
CRI: >90 CRI
Efficiency (%): 88.4
Lamp Life (hrs): 50000

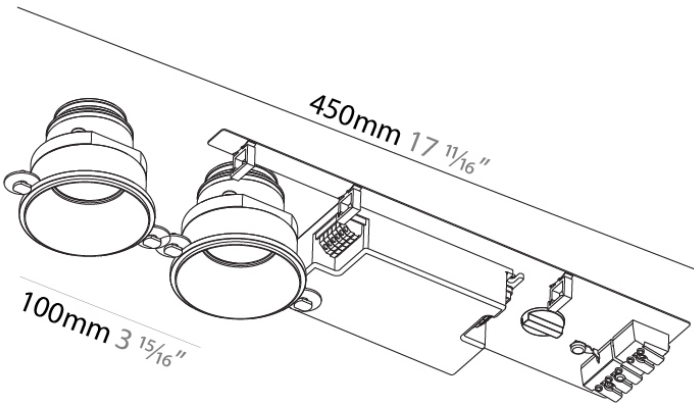
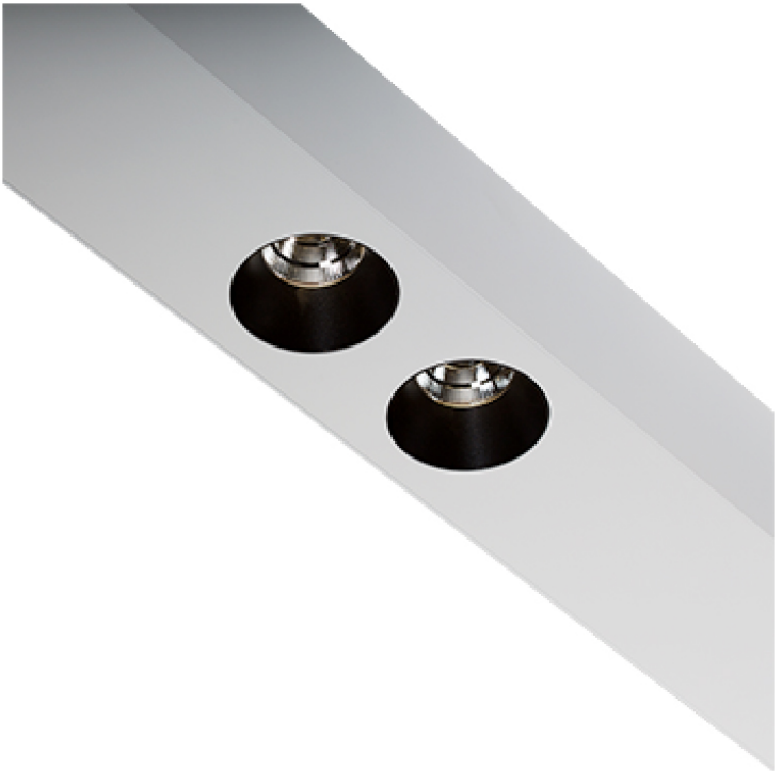
OPTICAL

Reflector°: 20 / 40 / 60

RATINGS AND CERTIFICATIONS

Certified By: Certified for North American Standards
IP rating: IP20

PROJECT	
TYPE	
NOTES	
QUANTITY	
DATE	



A3ID100-SUR-SYS COMPONENTS

A39034-

DESCRIPTION

Idaho 75 System - Surface/Suspension - Wall Fastening Spacer

GENERAL

Series: Idaho
Subseries: Idaho 100
Brand: Prolicht
Division: Architectural

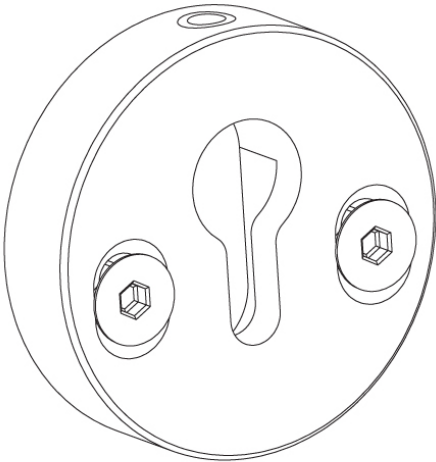
PHYSICAL

Shape: Round
Diameter (mm): 38
Diameter (in): 1 1/2
Width (mm): 10
Width (in): 3/8
Height (mm): 10
Height (in): 3/8
Fixture Finish: ANA / SSR / BKV / CWI / CRY / HAB / MSR / UFT / ITA /
RUA / OGR / FTG / MYG / RWR / LOD / PUS / FRO / FUP / KIA / POP /
BLS / SPG / MEY / GOH / GUM / CHC / COM / ABZ / JAG / OBR / MOS /
ROR
Fixture Material: Aluminum

RATINGS AND CERTIFICATIONS

Certified By: Certified for North American Standards
IP rating: IP20

PROJECT	
TYPE	
NOTES	
QUANTITY	
DATE	



max. distance: 1500mm 59 1/16"



A3ID100-SUR-SYS COMPONENTS

A3903500

DESCRIPTION

Idaho 75 System - Surface/Suspension - Wall Fastening Key Hole Milling

GENERAL

Series: Idaho
Subseries: Idaho 100
Brand: Prolicht
Division: Architectural

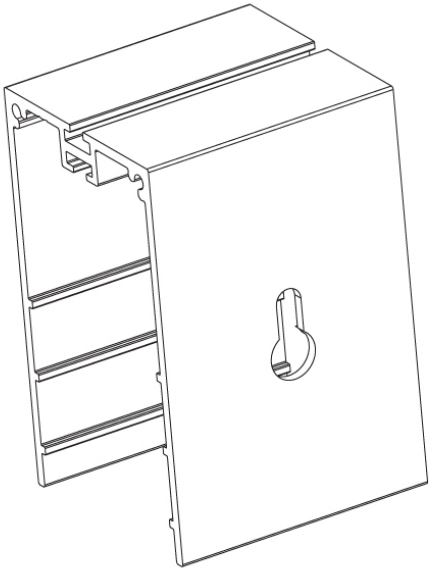
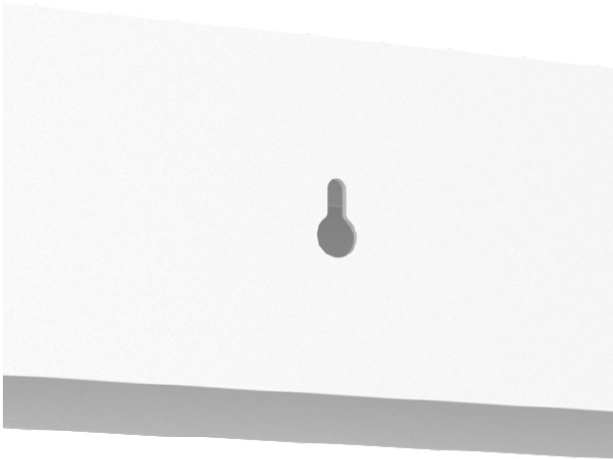
PHYSICAL

Shape: Rectangle
Installation Requirement: Max Distance: 1500mm / 59 1/16"
Fixture Material: Aluminum

RATINGS AND CERTIFICATIONS

Certified By: Certified for North American Standards
IP rating: IP20

PROJECT
TYPE
NOTES
QUANTITY
DATE



max. distance: 1500mm 59 1/16"



A3ID100-SUR-SYS COMPONENTS

A3992300

DESCRIPTION

Idaho 100 System - Opal Diffuser per Meter - Max 3000mm / 118 1/8"

GENERAL

Series: Idaho
Subseries: Idaho 100
Brand: Prolicht
Division: Architectural

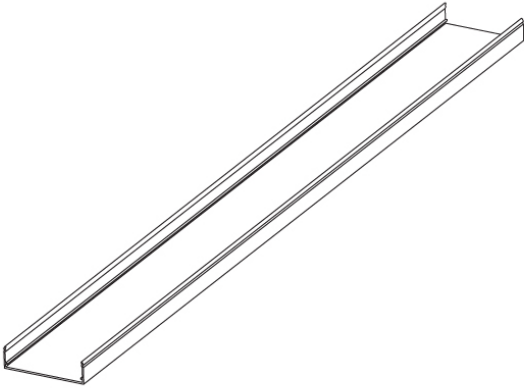
PHYSICAL

Shape: Rectangle
Length (mm): 1000
Length (in): 39 3/8
Width (mm): 99
Width (in): 3 7/8
Height (mm): 27
Height (in): 1 1/16
Weight (kg): 0.34
Weight (lbs): 0.75
Diffuser: PMMA - Opal

RATINGS AND CERTIFICATIONS

Certified By: Certified for North American Standards
IP rating: IP20

PROJECT
TYPE
NOTES
QUANTITY
DATE



max. 3000mm 118 1/8"



A3ID100-SUR-SYS COMPONENTS RECESSED

A39924-

DESCRIPTION

Idaho 100 System - Recessed / Surface / Suspension Aluminum Cap Profile - Max 3000mm / 118 1/8"

GENERAL

Series: Idaho
Subseries: Idaho 100
Brand: Prolicht
Division: Architectural
Mounting Type: Recessed
Mounting Location: Ceiling
Subcategory: Profile

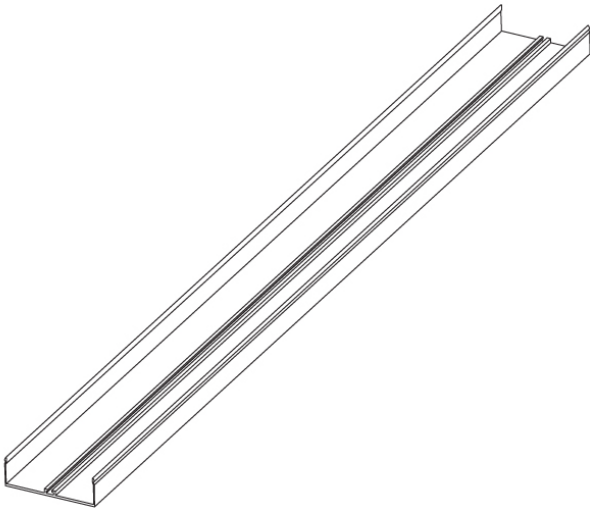
PHYSICAL

Shape: Rectangle
Length (mm): 1000
Length (in): 39 3/8
Width (mm): 99
Width (in): 3 7/8
Height (mm): 27
Height (in): 1 1/16
Weight (kg): 0.363
Weight (lbs): 0.8
Fixture Finish: ANA / SSR / BKV / CWI / CRY / HAB / MSR / UFT / ITA / RUA / OGR / FTG / MYG / RWR / LOD / PUS / FRO / FUP / KIA / POP / BLS / SPG / MEY / GOH / GUM / CHC / COM / ABZ / JAG / OBR / MOS / ROR
Fixture Material: Aluminum

RATINGS AND CERTIFICATIONS

Certified By: Certified for North American Standards
IP rating: IP20

PROJECT	
TYPE	
NOTES	
QUANTITY	
DATE	



max. 3000mm 118 1/8"

A3ID100-SUR-SYS COMPONENTS

A3992500

DESCRIPTION

Idaho 100 System - Linear Coupler

GENERAL

Series: Idaho
Subseries: Idaho 100
Brand: Prolicht
Division: Architectural

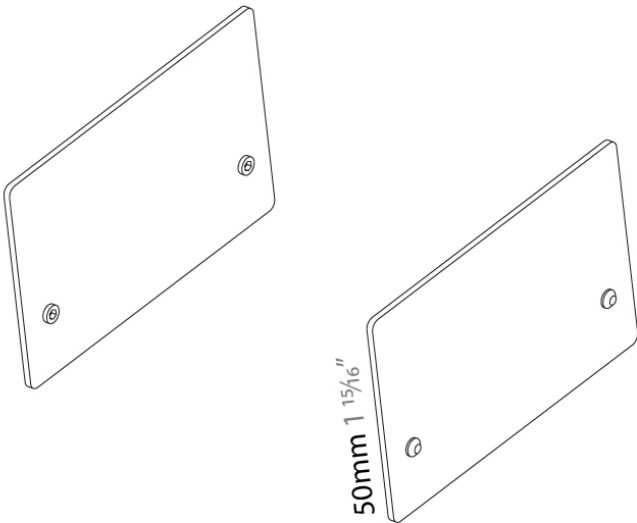
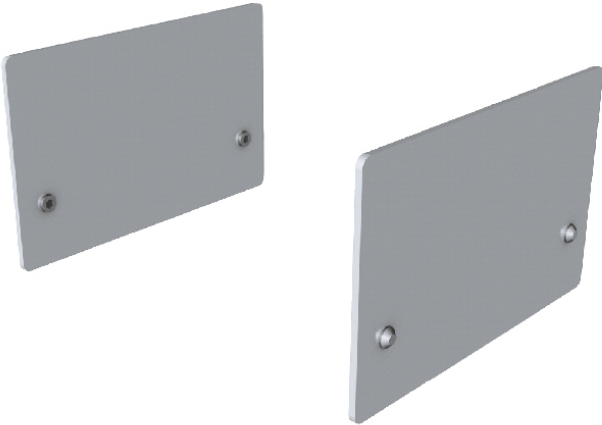
PHYSICAL

Shape: Rectangle
Length (mm): 200
Length (in): 7 7/8
Width (mm): 98
Width (in): 3 7/8
Height (mm): 50
Height (in): 1 15/16
Weight (kg): 0.1
Weight (lbs): 0.22
Fixture Material: Aluminum

RATINGS AND CERTIFICATIONS

Certified By: Certified for North American Standards
IP rating: IP20

PROJECT
TYPE
NOTES
QUANTITY
DATE



A3ID100-SUR-SYS COMPONENTS

PROJECT

TYPE

NOTES

QUANTITY

DATE

LEGEND

	floor-mounted		pivotal		special LED (upon request) RGB, RGBW, tunable, gold+, meat+, art+, fashion+
	wall and ceiling: recessed and surface mounted		rotating		warm dim / natural dimming LED
	ceiling-mounted and wall-mounted		illuminate tilted		rechargeable battery powered
	wall-mounted		color of suspension cable		fixture with natural vivid LED (upon request)
	omni-directional light distribution		length of suspension cable		color rendering index
	direct light distribution		reflector degree selection		color temperature
	direct/indirect light distribution		super spot		lumen (luminous flux)
	indirect light distribution		lens		efficacy (lumens per watt)
	asymmetric light distribution		lens pack		Unified Glare Rating (UGR) range from 5-40
	aura light distribution		shine ring		marine grade (AISI 316 stainless steel)
	round wall or ceiling cut-out		integrated shine ring with diffuser		walk on
	square wall or ceiling cut-out		free individual colors 01-29		drive on
	the supplied jig specifies the cutout dimensions		individual colors: 00 (free of charge), 01-25 (extra charge)		Dark Sky Compliance
	minimum distance (meters) lamp - object		luminaire part to be colored (F1)		Americans with Disabilities Act (less than 4" off the wall located between 27"-84" from floor)
	recessed depth		luminaire part to be colored (F2)		lamp protected against explosion
	ceiling thickness in mm		luminaire part to be colored (F3)		blown glass using traditional methods by master glass blower
	ceiling thickness selection		luminaire part to be colored (F4)		acoustic material
	dimmmable DP (phase), DV (0-10V), DD (dali), DS (step-dim)		luminaire part to be colored (F5)		protection class I, protection insulation
	included or excluded LED driver/transformer/control gear		color of 3-circuit adaptor		protection class II, protection insulation
	separately switchable		indirect diffuser		ETL Certified to UL and CSA Standards
	sensor		direct diffuser		UL Certified to UL and CSA Standards
	remote control		ball-proof (upon request)		CSA Certified to UL and CSA Standards
	available upon request		accessory		Certified for North American Standards

IP RATING

	protected against ingress of solid bodies greater than 12.5mm (finger)
	protected against ingress of solid bodies greater than 2.5mm protected against sprays of water up to 60 degrees from the vertical (rain)
	protected against ingress of solid bodies greater than 1mm (wire) no protection against the ingress of moisture
	protected against ingress of solid bodies greater than 1mm (wire) protected against sprays of water up to 60 degrees from the vertical (rain)
	protected against ingress of solid bodies greater than 1mm (wire) protected against water splashed from all directions
	protected against limited ingress of dust (wet rooms/covered outdoor areas) protected against water splashed from all directions
	protected against ingress of dust protected against jets of water
	protected against ingress of dust protected against powerful jets of water or heavy seas
	protected against ingress of dust protected against immersion of water between 15cm - 1m for 30 minutes
	protected against ingress of dust protected against immersion of water under pressure for long periods

IK RATING

	protected against 0.14 joules impact (equivalent to 0.25kg mass dropped from 56mm above the surface)
	protected against 0.2 joules impact (equivalent to 0.25kg mass dropped from 80mm above the surface)
	protected against 0.35 joules impact (equivalent to 0.25kg mass dropped from 140mm above the surface)
	protected against 0.5 joules impact (equivalent to 0.25kg mass dropped from 200mm above the surface)
	protected against 0.7 joules impact (equivalent to 0.25kg mass dropped from 280mm above the surface)
	protected against 1 joules impact (equivalent to 0.25kg mass dropped from 400mm above the surface)
	protected against 2 joules impact (equivalent to 0.5kg mass dropped from 400mm above the surface)
	protected against 5 joules impact (equivalent to 1.7kg mass dropped from 300mm above the surface)
	protected against 10 joules impact (equivalent to 5.0kg mass dropped from 200mm above the surface)
	protected against 20 joules impact (equivalent to 5.0kg mass dropped from 400mm above the surface)