

PROJECT	
TYPE	
NOTES	
QUANTITY	
DATE	

A36600-

DESCRIPTION

Groove System - Trimless Profile per Meter - Max 3,00mm / 118 1/8"

GENERAL

Series: Groove  
Brand: Prolicht  
Division: Architectural  
Mounting Type: Trimless  
Mounting Location: Ceiling

PHYSICAL

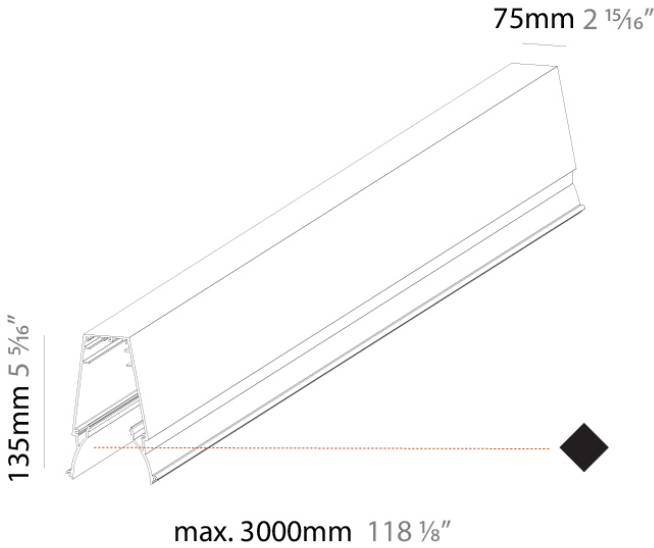
Shape: Oblong  
Length (mm): 1000  
Length (in): 39 3/8  
Width (mm): 89  
Width (in): 3 1/2  
Height (mm): 135  
Height (in): 5 5/16  
Weight (kg): 2.3  
Weight (lbs): 5.07  
Fixture Finish: SSR / BKV / CWI / CRY / HAB / LAG / UFT / ITA / RUA / RUR / MIC / FTG / MYG / TWT / LOD / PUS / FRO / FUP / KIA / POP / BLS / SPG / MEY / GOH / GUM / CHC / COM / ABZ / JAG / OBR / MOS / ROR  
Fixture Material: Aluminum

LED

CRI: >90 CRI

RATINGS AND CERTIFICATIONS

Certified By: Certified for North American Standards  
IP rating: IP20



A3GRR-TRI-SYS COMPONENTS

A38524-

DESCRIPTION

Grooline Recessed Light Insert for Groove System - 1140mm / 44 7/8" - 20.2W / 12.8W [O/P] (3500K) - LED (Zhaga Standard) - 3000K / 3500K / 4000K

GENERAL

Series: Groove  
Brand: Prolicht  
Division: Architectural  
Mounting Location: Ceiling  
Subcategory: Profile

PHYSICAL

Shape: Rectangle  
Length (mm): 1140  
Length (in): 44 7/8  
Width (mm): 36  
Width (in): 1 7/16  
Height (mm): 37  
Height (in): 1 7/16  
Light Distribution: Direct  
Weight (kg): 1.218  
Weight (lbs): 2.69  
Diffuser: PMMA - Opal  
Fixture Material: Metal

ELECTRICAL

Input Wattage Range: 20 - 29 W  
Lamp Type: LED (Zhaga Standard)  
Input Wattage (W): 20.2  
Total Output Wattage (W): 16 / 12.8 (3500K)  
Dimming: 0-10V Dimming / Phase Dimming (120Vac Only)  
Driver Included: Yes  
Driver Location: Integrated  
Driver Type: Constant Current - Universal  
Driver Class: Class 2  
Input Voltage (V): 120 - 277  
Constant Current (mA): 350 / 400 (3500K)

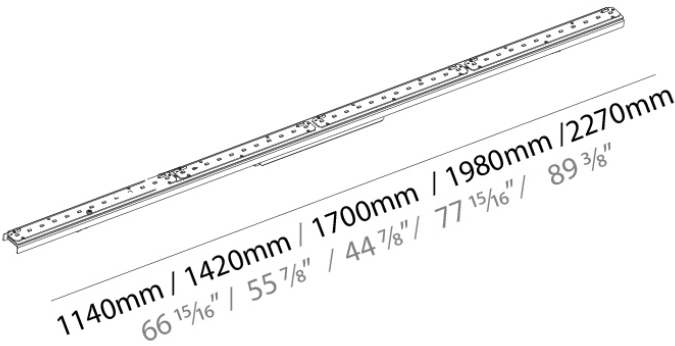
LED

Color Temperature (°K): 3000 / 3500 / 4000  
Max. Delivered Lumen (lm): 1370 / 1421 / 1450  
Nominal Lumen (lm): 2840 / 2940 / 3000  
CRI: >90 CRI  
Lamp Life (hrs): 50000

RATINGS AND CERTIFICATIONS

Certified By: Certified for North American Standards  
IP rating: IP20

PROJECT	
TYPE	
NOTES	
QUANTITY	
DATE	



A3GRR-TRI-SYS COMPONENTS

A38526-

DESCRIPTION

Grooline Recessed Light Insert for Groove System - 1420mm / 55 7/8" - 25W / 20W [O/P] (3500K) - LED (Zhaga Standard) - 3000K / 3500K / 4000K

GENERAL

Series: Groove  
Brand: Prolicht  
Division: Architectural  
Mounting Location: Ceiling

PHYSICAL

Shape: Rectangle  
Length (mm): 1420  
Length (in): 55 7/8  
Width (mm): 36  
Width (in): 1 1/6  
Height (mm): 37  
Height (in): 1 7/16  
Light Distribution: Direct  
Weight (kg): 1.454  
Weight (lbs): 3.21  
Diffuser: PMMA - Opal  
Fixture Material: Metal

ELECTRICAL

Input Wattage Range: 20 - 29 W  
Lamp Type: LED (Zhaga Standard)  
Input Wattage (W): 25.3  
Total Output Wattage (W): 20 / 16 (3500K)  
Dimming: 0-10V Dimming / Phase Dimming (120Vac Only)  
Driver Included: Yes  
Driver Location: Integrated  
Driver Type: Constant Current - Universal  
Driver Class: Class 2  
Input Voltage (V): 120 - 277  
Constant Current (MA): 350 / 500 (3500K)

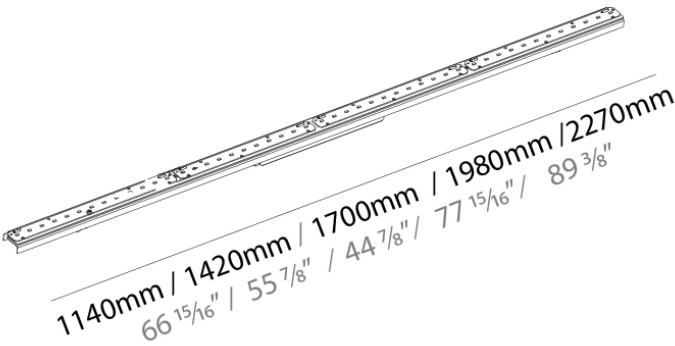
LED

Color Temperature (°K): 3000 / 3500 / 4000  
Max. Delivered Lumen (lm): 1710 / 1774 / 1810  
Nominal Lumen (lm): 3550 / 3675 / 3750  
CRI: >90 CRI  
Lamp Life (hrs): 50000

RATINGS AND CERTIFICATIONS

Certified By: Certified for North American Standards  
IP rating: IP20

PROJECT	
TYPE	
NOTES	
QUANTITY	
DATE	



A3GRR-TRI-SYS COMPONENTS

A38528-

DESCRIPTION

Grooline Recessed Light Insert for Groove System - 1700mm / 66 15/16" - 30.4W / 19.2W [O/P] (3500K) - LED (Zhaga Standard) - 3000K / 3500K / 4000K

GENERAL

Series: Groove  
Brand: Prolicht  
Division: Architectural  
Mounting Location: Ceiling  
Subcategory: Profile

PHYSICAL

Shape: Rectangle  
Length (mm): 1700  
Length (in): 66 15/16  
Width (mm): 36  
Width (in): 1 7/16  
Height (mm): 37  
Height (in): 1 7/16  
Light Distribution: Direct  
Weight (kg): 1.688  
Weight (lbs): 3.72  
Diffuser: PMMA - Opal  
Fixture Material: Metal

ELECTRICAL

Input Wattage Range: 30 - 49 W  
Lamp Type: LED (Zhaga Standard)  
Input Wattage (W): 30.4  
Total Output Wattage (W): 24 / 19.2 (3500K)  
Dimming: 0-10V Dimming / Phase Dimming (120Vac Only)  
Driver Included: Yes  
Driver Location: Integrated  
Driver Type: Constant Current - 120 / 277Vac  
Driver Class: Class 2  
Input Voltage (V): 120 - 277  
Constant Current (mA): 350 / 600 (3500K)

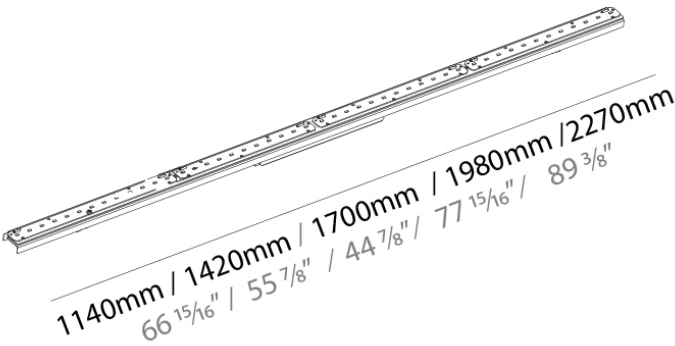
LED

Color Temperature (°K): 3000 / 3500 / 4000  
Max. Delivered Lumen (lm): 2050 / 2127 / 2170  
Nominal Lumen (lm): 4260 / 4410 / 4500  
CRI: >90 CRI  
Lamp Life (hrs): 50000

RATINGS AND CERTIFICATIONS

Certified By: Certified for North American Standards  
IP rating: IP20

PROJECT	
TYPE	
NOTES	
QUANTITY	
DATE	



A3GRR-TRI-SYS COMPONENTS

A38530-

DESCRIPTION

Grooline Recessed Light Insert for Groove System - 1980mm / 77 15/16" - 35W / 22.4 [O/P] (3500K) - LED (Zhaga Standard) - 3000K / 3500K / 4000K

GENERAL

Series: Groove  
Brand: Prolicht  
Division: Architectural  
Mounting Location: Ceiling  
Subcategory: Profile

PHYSICAL

Shape: Rectangle  
Length (mm): 1980  
Length (in): 77 15/16  
Width (mm): 36  
Width (in): 1 7/16  
Height (mm): 37  
Height (in): 1 7/16  
Light Distribution: Direct  
Weight (kg): 1.922  
Weight (lbs): 4.24  
Diffuser: PMMA - Opal  
Fixture Material: Metal

ELECTRICAL

Input Wattage Range: 30 - 49 W  
Lamp Type: LED (Zhaga Standard)  
Input Wattage (W): 35.4  
Total Output Wattage (W): 28 / 22.4 (35000K)  
Dimming: 0-10V Dimming / Phase Dimming (120Vac Only)  
Driver Included: Yes  
Driver Location: Integrated  
Driver Type: Constant Current - 120 / 277Vac  
Driver Class: Class 2  
Input Voltage (V): 120 - 277  
Constant Current (MA): 350 / 700 (3500K)

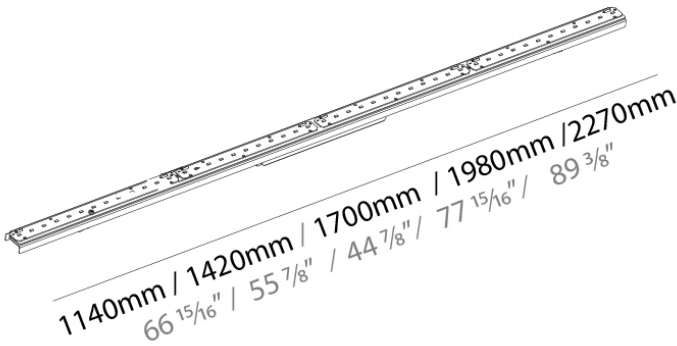
LED

Color Temperature (°K): 3000 / 3500 / 4000  
Max. Delivered Lumen (lm): 2400 / 2479 / 2530  
Nominal Lumen (lm): 4970 / 5125 / 5250  
CRI: >90 CRI  
Lamp Life (hrs): 50000

RATINGS AND CERTIFICATIONS

Certified By: Certified for North American Standards  
IP rating: IP20

PROJECT	
TYPE	
NOTES	
QUANTITY	
DATE	



A3GRR-TRI-SYS COMPONENTS

A38532-

DESCRIPTION

Grooline Recessed Light Insert for Groove System - 2270mm / 89 3/8" - 40W / 25.6W [O/P] (3500K) - LED (Zhaga Standard) - 3000K / 3500K / 4000K

GENERAL

Series: Groove  
Brand: Prolicht  
Division: Architectural  
Mounting Location: Ceiling  
Subcategory: Profile

PHYSICAL

Shape: Rectangle  
Length (mm): 2270  
Length (in): 89 3/8  
Width (mm): 36  
Width (in): 1 7/16  
Height (mm): 37  
Height (in): 1 7/16  
Light Distribution: Direct  
Weight (kg): 2.193  
Weight (lbs): 4.84  
Diffuser: PMMA - Opal  
Fixture Material: Metal

ELECTRICAL

Input Wattage Range: 30 - 49 W  
Lamp Type: LED (Zhaga Standard)  
Input Wattage (W): 40.5  
Total Output Wattage (W): 32 / 25.6 (3500K)  
Dimming: 0-10V Dimming / Phase Dimming (120Vac Only)  
Driver Included: Yes  
Driver Location: Integrated  
Driver Type: Constant Current - 120 / 277Vac  
Driver Class: Class 2  
Input Voltage (V): 120 - 277  
Constant Current (mA): 350 / 800 (3500K)

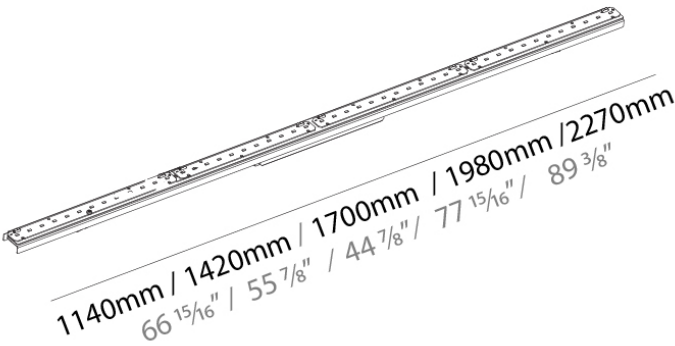
LED

Color Temperature (°K): 3000 / 3500 / 4000  
Max. Delivered Lumen (lm): 2740 / 2832 / 2890  
Nominal Lumen (lm): 5680 / 5880 / 6000  
CRI: >90 CRI  
Lamp Life (hrs): 50000

RATINGS AND CERTIFICATIONS

Certified By: Certified for North American Standards  
IP rating: IP20

PROJECT	
TYPE	
NOTES	
QUANTITY	
DATE	



A3GRR-TRI-SYS COMPONENTS

A39627-

DESCRIPTION

Groove - Mounting Bracket - indicate ceiling thickness - 10mm / 12.5mm / 15mm

GENERAL

Series: Groove  
Brand: Prolicht  
Division: Architectural

PHYSICAL

Length (mm): 169  
Length (in): 6 5/8  
Width (mm): 68  
Width (in): 2 11/16  
Height (mm): 145  
Height (in): 5 11/16  
Ceiling Thickness (mm): 10 / 12.5 / 15  
Ceiling Thickness (in): 3/8 or 1/2 or 9/16  
Weight (kg): 0.2  
Weight (lbs): 0.44  
Fixture Material: Aluminum

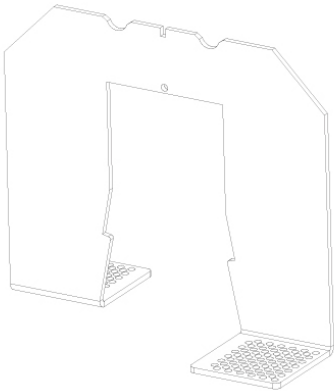
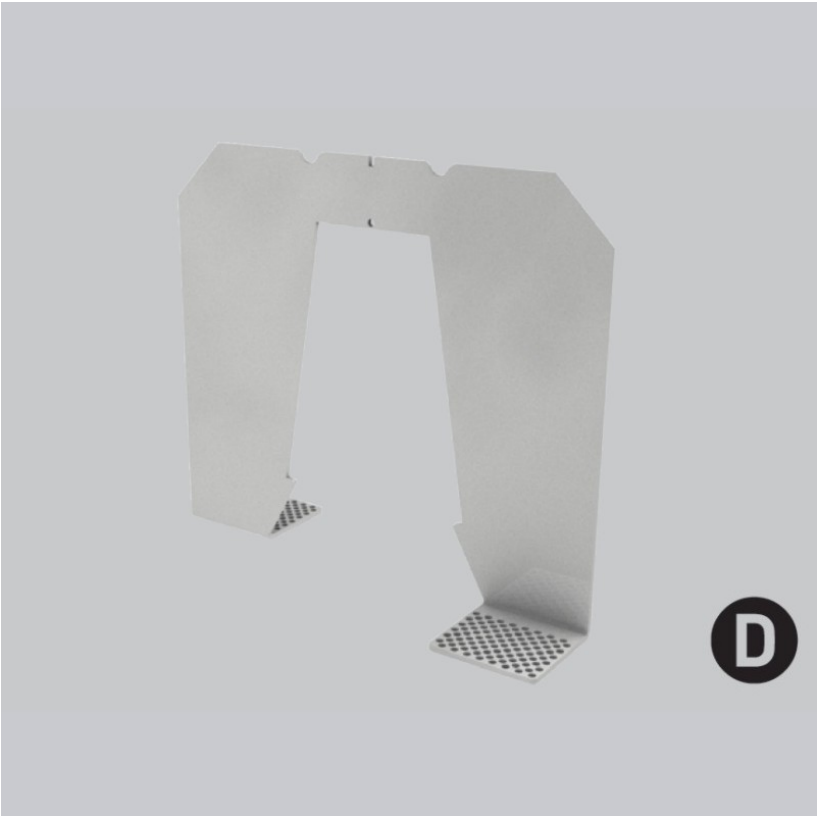
LED

CRI: >90 CRI

RATINGS AND CERTIFICATIONS

Certified By: Certified for North American Standards  
IP rating: IP20

PROJECT
TYPE
NOTES
QUANTITY
DATE



distance=max. 1000mm 39 3/8"



A3GRR-TRI-SYS COMPONENTS

A3962800

DESCRIPTION

Groove System - Frame Alignment Kit

GENERAL

Series: Groove  
Brand: Prolicht  
Division: Architectural

PHYSICAL

Length (mm): 92  
Length (in): 3 5/8  
Width (mm): 112  
Width (in): 4 7/16  
Height (mm): 235  
Height (in): 9 1/4  
Weight (kg): 0.91  
Weight (lbs): 2  
Fixture Material: Aluminum

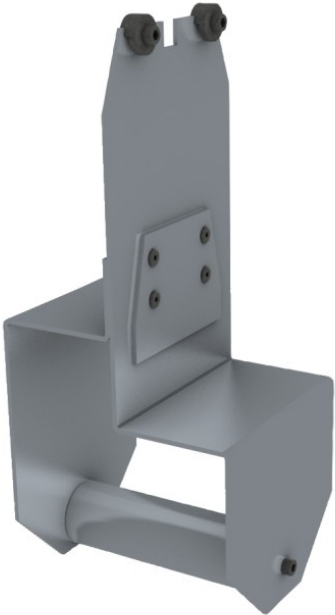
LED

CRI: >90 CRI

RATINGS AND CERTIFICATIONS

Certified By: Certified for North American Standards  
IP rating: IP20

PROJECT
TYPE
NOTES
QUANTITY
DATE





A3GRR-TRI-SYS COMPONENTS

A3962900

DESCRIPTION

Groove System - Trimless Linear Coupler

GENERAL

Series: Groove

Brand: Prolicht

Division: Architectural

PHYSICAL

Shape: Rectangle

Length (mm): 80

Length (in): 3 1/8

Width (mm): 8

Width (in): 5/16

Height (mm): 2

Height (in): 1/16

Weight (kg): 0.01

Weight (lbs): 0.22

Fixture Material: Aluminum

LED

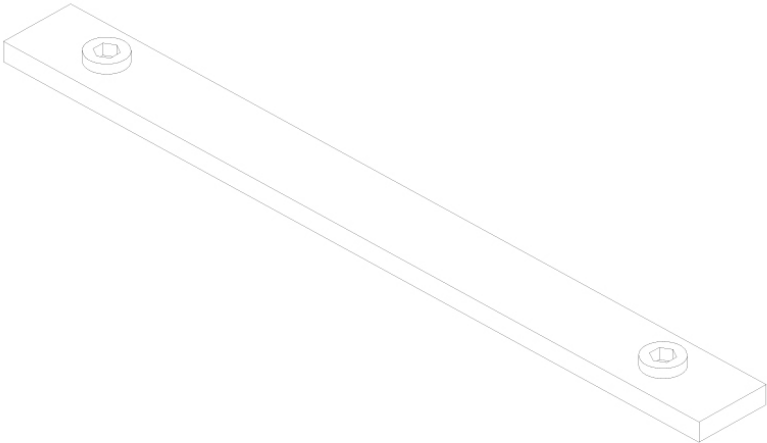
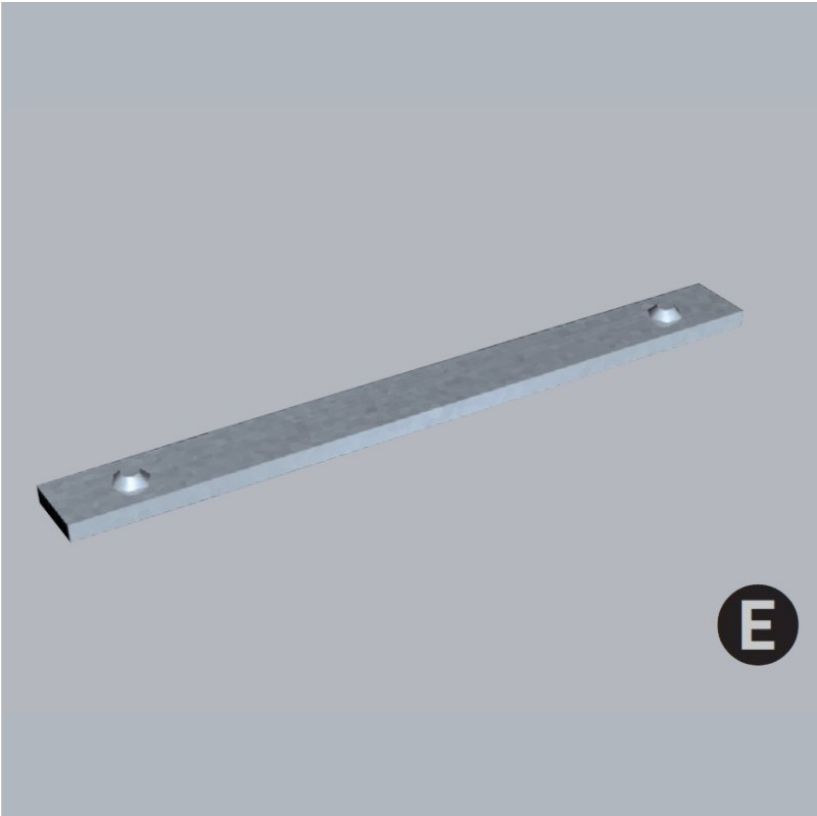
CRI: >90 CRI

RATINGS AND CERTIFICATIONS

Certified By: Certified for North American Standards

IP rating: IP20

PROJECT
TYPE
NOTES
QUANTITY
DATE



A3GRR-TRI-SYS COMPONENTS

A3964300

DESCRIPTION

Groove System - Surface/Suspension / Idaho 40 Trimless  
System - Flat Opal Diffuser Per Meter - Max 3,000mm / 118 1/8"

GENERAL

Series: Groove  
Brand: Prolicht  
Division: Architectural

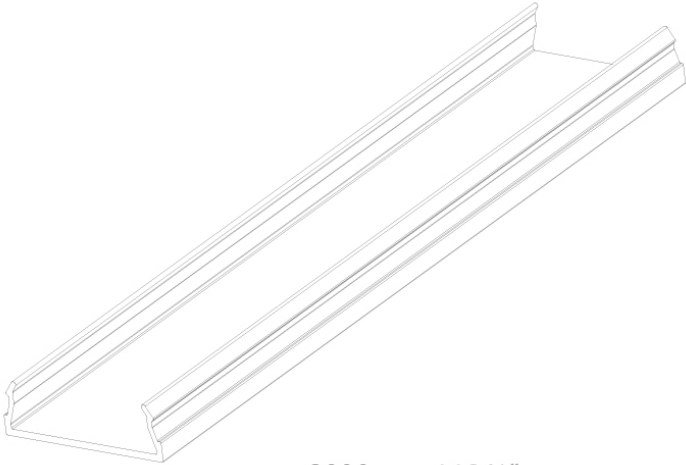
PHYSICAL

Shape: Rectangle  
Length (mm): 1000  
Length (in): 39 3/8  
Width (mm): 42  
Width (in): 1 5/8  
Height (mm): 14  
Height (in): 9/16  
Weight (kg): 0.13  
Weight (lbs): 0.287  
Diffuser: PMMA - Opal

RATINGS AND CERTIFICATIONS

Certified By: Certified for North American Standards  
IP rating: IP20

PROJECT
TYPE
NOTES
QUANTITY
DATE



max. 3000mm 118 1/8"



A3GRR-TRI-SYS COMPONENTS

A39914-

**DESCRIPTION**  
Groove System - Trimless Round End Cap

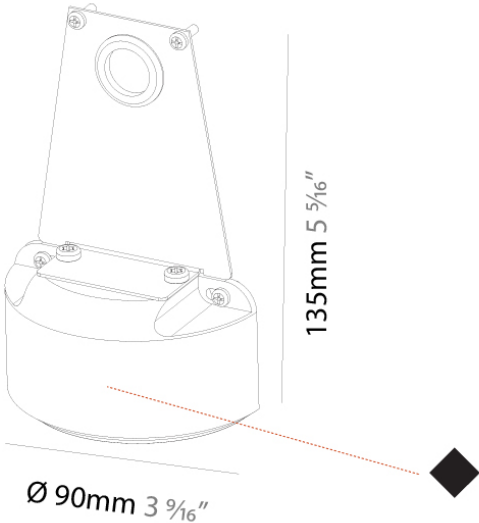
**GENERAL**  
Series: Groove  
Brand: Prolicht  
Division: Architectural  
Mounting Location: Ceiling  
Subcategory: Profile

**PHYSICAL**  
Shape: Round  
Length (mm): 90  
Length (in): 3 9/16  
Width (mm): 42  
Width (in): 1 5/8  
Height (mm): 135  
Height (in): 5 5/16  
Weight (kg): 0.218  
Weight (lbs): 0.48  
Fixture Finish: SSR / BKV / CWI / CRY / HAB / LAG / UFT / ITA / RUA / RUR / MIC / FTG / MYG / TWT / LOD / PUS / FRO / FUP / KIA / POP / BLS / SPG / MEY / GOH / GUM / CHC / COM / ABZ / JAG / OBR / MOS / ROR  
Fixture Material: Aluminum

**LED**  
CRI: >90 CRI

**RATINGS AND CERTIFICATIONS**  
Certified By: Certified for North American Standards  
IP rating: IP20

PROJECT	
TYPE	
NOTES	
QUANTITY	
DATE	



D = 88



A3GRR-TRI-SYS COMPONENTS

A39916-

DESCRIPTION

Groove System - Trimless Flat End Cap

GENERAL

Series: Groove  
Brand: Prolicht  
Division: Architectural  
Mounting Location: Ceiling  
Subcategory: Profile

PHYSICAL

Length (mm): 90  
Length (in): 3 9/16  
Width (mm): 2  
Width (in): 1/16  
Height (mm): 135  
Height (in): 5 5/16  
Weight (kg): 0.054  
Weight (lbs): 0.119  
Fixture Material: Aluminum

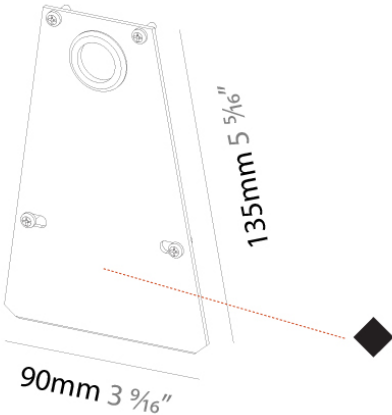
LED

CRI: >90 CRI

RATINGS AND CERTIFICATIONS

Certified By: Certified for North American Standards  
IP rating: IP20

PROJECT
TYPE
NOTES
QUANTITY
DATE



D = 10



A3GRR-TRI-SYS COMPONENTS

A3993000

DESCRIPTION

Groove System - Surface/Suspension Curved Opal Diffuser Per Meter - Max 3,000mm / 118 1/8"

GENERAL

Series: Groove  
Brand: Prolicht  
Division: Architectural  
Mounting Location: Ceiling  
Subcategory: Profile

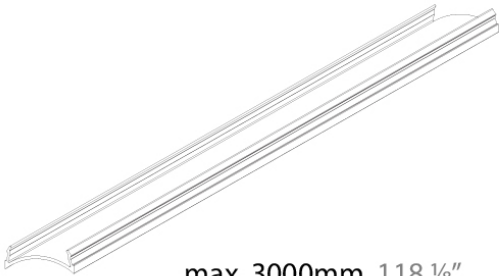
PHYSICAL

Shape: Rectangle  
Length (mm): 1000  
Length (in): 39 3/8  
Width (mm): 42  
Width (in): 1 5/8  
Height (mm): 14  
Height (in): 9/16  
Weight (kg): 0.2  
Weight (lbs): 0.44  
Diffuser: Opal - PMMA

RATINGS AND CERTIFICATIONS

Certified By: CSA Certified to UL and CSA Standards  
IP rating: IP20

PROJECT
TYPE
NOTES
QUANTITY
DATE



max. 3000mm 118 1/8"



A3GRR-TRI-SYS COMPONENTS

PROJECT
TYPE
NOTES
QUANTITY
DATE

A39931-

DESCRIPTION

Groove System - Cap Profile per Meter - Max 3,000mm / 118 1/8"

GENERAL

Series: Groove
Brand: Prolicht
Division: Architectural
Mounting Location: Ceiling
Subcategory: Profile

PHYSICAL

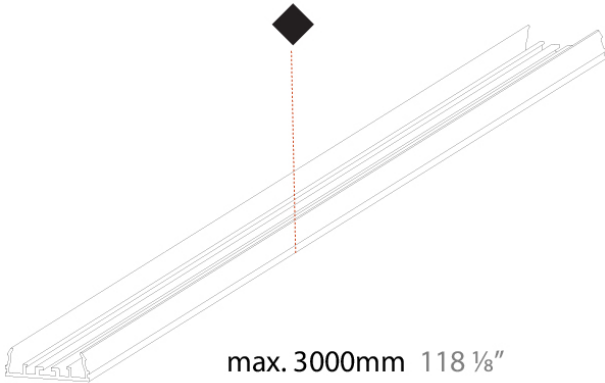
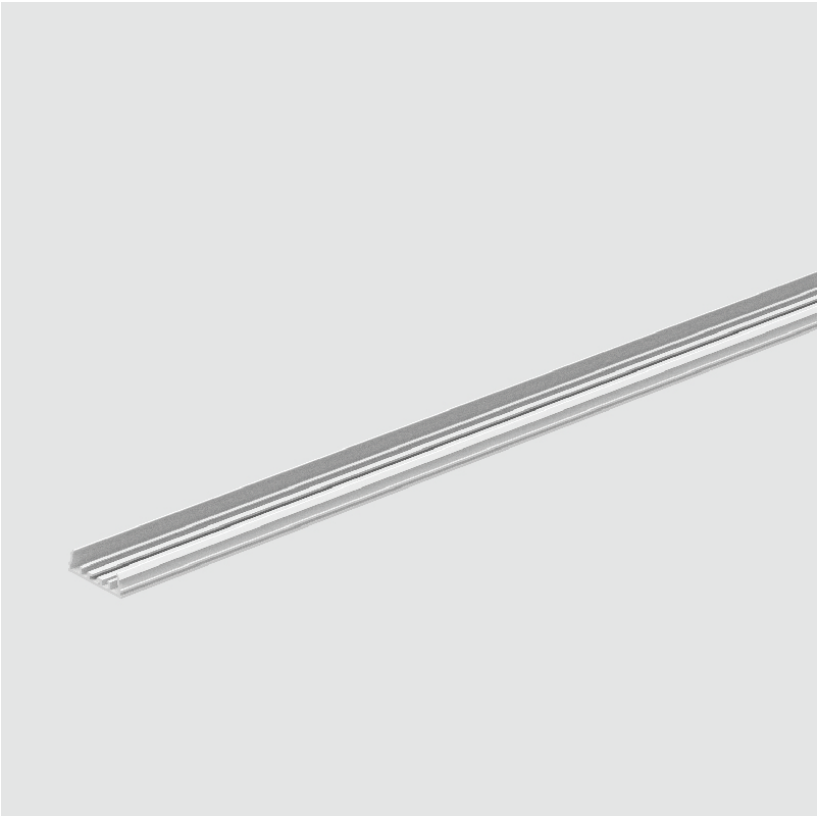
Shape: Rectangle
Length (mm): 1000
Length (in): 39 3/8
Width (mm): 42
Width (in): 1 5/8
Height (mm): 14
Height (in): 9/16
Weight (kg): 0.37
Weight (lbs): 0.82
Fixture Finish: SSR / BKV / CWI / CRY / HAB / LAG / UFT / ITA / RUA / RUR / MIC / FTG / MYG / TWT / LOD / PUS / FRO / FUP / KIA / POP / BLS / SPG / MEY / GOH / GUM / CHC / COM / ABZ / JAG / OBR / MOS / ROR
Fixture Material: Aluminum

LED

CRI: >90 CRI
--------------

RATINGS AND CERTIFICATIONS

Certified By: Certified for North American Standards
IP rating: IP20



## A3GRR-TRI-SYS COMPONENTS

PROJECT

TYPE

NOTES

QUANTITY

DATE

### LEGEND

	floor-mounted		pivotal		special LED (upon request) RGB, RGBW, tunable, gold+, meat+, art+, fashion+
	wall and ceiling: recessed and surface mounted		rotating		warm dim / natural dimming LED
	ceiling-mounted and wall-mounted		illuminate tilted		rechargeable battery powered
	wall-mounted		color of suspension cable		fixture with natural vivid LED (upon request)
	omni-directional light distribution		length of suspension cable		color rendering index
	direct light distribution		reflector degree selection		color temperature
	direct/indirect light distribution		super spot		lumen (luminous flux)
	indirect light distribution		lens		efficacy (lumens per watt)
	asymmetric light distribution		lens pack		Unified Glare Rating (UGR) range from 5-40
	aura light distribution		shine ring		marine grade (AISI 316 stainless steel)
	round wall or ceiling cut-out		integrated shine ring with diffuser		walk on
	square wall or ceiling cut-out		free individual colors 01-29		drive on
	the supplied jig specifies the cutout dimensions		individual colors: 00 (free of charge), 01-25 (extra charge)		Dark Sky Compliance
	minimum distance (meters) lamp - object		luminaire part to be colored (F1)		Americans with Disabilities Act (less than 4" off the wall located between 27"-84" from floor)
	recessed depth		luminaire part to be colored (F2)		lamp protected against explosion
	ceiling thickness in mm		luminaire part to be colored (F3)		blown glass using traditional methods by master glass blower
	ceiling thickness selection		luminaire part to be colored (F4)		acoustic material
	dimmable DP (phase), DV (0-10V), DD (dali), DS (step-dim)		luminaire part to be colored (F5)		protection class I, protection insulation
	included or excluded LED driver/transformer/control gear		color of 3-circuit adaptor		protection class II, protection insulation
	separately switchable		indirect diffuser		ETL Certified to UL and CSA Standards
	sensor		direct diffuser		UL Certified to UL and CSA Standards
	remote control		ball-proof (upon request)		CSA Certified to UL and CSA Standards
	available upon request		accessory		Certified for North American Standards

### IP RATING

	protected against ingress of solid bodies greater than 12.5mm (finger)
	protected against ingress of solid bodies greater than 2.5mm protected against sprays of water up to 60 degrees from the vertical (rain)
	protected against ingress of solid bodies greater than 1mm (wire) no protection against the ingress of moisture
	protected against ingress of solid bodies greater than 1mm (wire) protected against sprays of water up to 60 degrees from the vertical (rain)
	protected against ingress of solid bodies greater than 1mm (wire) protected against water splashed from all directions
	protected against limited ingress of dust (wet rooms/covered outdoor areas) protected against water splashed from all directions
	protected against ingress of dust protected against jets of water
	protected against ingress of dust protected against powerful jets of water or heavy seas
	protected against ingress of dust protected against immersion of water between 15cm - 1m for 30 minutes
	protected against ingress of dust protected against immersion of water under pressure for long periods

### IK RATING

	protected against 0.14 joules impact (equivalent to 0.25kg mass dropped from 56mm above the surface)
	protected against 0.2 joules impact (equivalent to 0.25kg mass dropped from 80mm above the surface)
	protected against 0.35 joules impact (equivalent to 0.25kg mass dropped from 140mm above the surface)
	protected against 0.5 joules impact (equivalent to 0.25kg mass dropped from 200mm above the surface)
	protected against 0.7 joules impact (equivalent to 0.25kg mass dropped from 280mm above the surface)
	protected against 1 joules impact (equivalent to 0.25kg mass dropped from 400mm above the surface)
	protected against 2 joules impact (equivalent to 0.5kg mass dropped from 400mm above the surface)
	protected against 5 joules impact (equivalent to 1.7kg mass dropped from 300mm above the surface)
	protected against 10 joules impact (equivalent to 5.0kg mass dropped from 200mm above the surface)
	protected against 20 joules impact (equivalent to 5.0kg mass dropped from 400mm above the surface)